



LINEA INDEX

Posizionamento automatico del portautensile su 360° tramite mandrino macchina tramite un sistema di frizione interno attivato da aria compressa max 6 bar.
NESSUNA POSIZIONE FISSA. ORIENTAMENTO SU TUTTI GLI ANGOLI.

*Automatic positioning of the cutting holder around 360° by using machine spindle through an internal clutch mechanism activated by compressed air max 6 bar. **NO FIXED POSITION. ANY ANGLE POSSIBLE.***

FAMIGLIA TESTE INDEX

Index heads



QR CODE SCAN



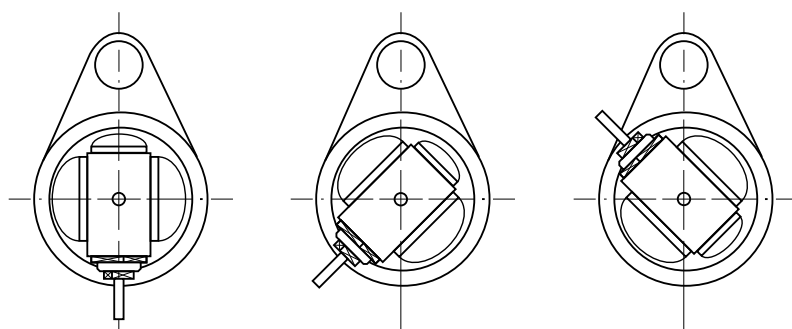


Linea **INDEX**

INDEX Line

Le teste della **Linea INDEX** consentono di posizionare il portautensile in modo automatico sui 360° utilizzando l'asse controllato della macchina utensile. **Possono quindi essere montate SOLAMENTE su macchine con asse controllato e aria esterna (max 6 bar) tramite lo Stop Block.**

*With the **INDEX Line** it is possible to orientate and position automatically over 360° the output of the head by using the controlled axis of the machine center. This line **CAN ONLY** be mounted on machines with controlled C axis and external air through the Stop Block (max 6 bar).*



- 1** | Porzione di testa modular standard posizionabile su 360°.

Portion of the standard modular Head to be oriented over 360°.

- 2** | Porzione di testa con sistema INDEX.

Portion of the head with INDEX system.

- 3** | Aria dallo Stop Block (6 bar).

Air trough the Stop Block (6 bar).



Linea **INDEX**

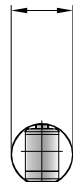
INDEX Line

T90-0.3 SLIMLINE

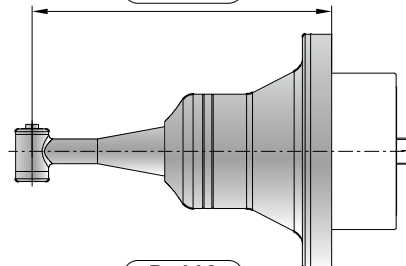
Technical data / Dati tecnici

RPM max. / Max. Velocità input	min ⁻¹	15.000
Ratio (reduction)		3:4
Weight / Peso	Kg	3
Collet / Pinza		3 mm

Ø23.5



R=115

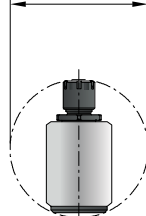


T90-0.4

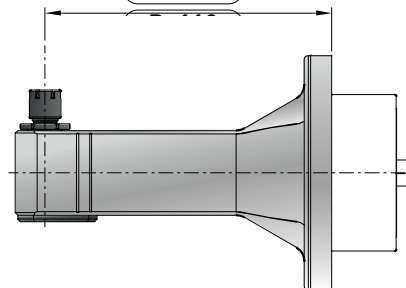
Technical data / Dati tecnici

RPM max. / Max. Velocità input	min ⁻¹	10.000
Ratio		1:1
Weight / Peso	Kg	4
Collet / Pinza		ER-8 0,5/5 mm

Ø53



R=110

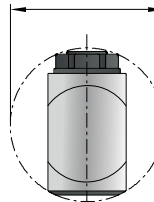


T90-0.5

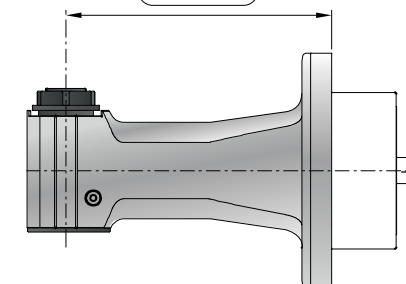
Technical data / Dati tecnici

RPM max. / Max. Velocità input	min ⁻¹	10.000
Ratio		1:1
Weight / Peso	Kg	4
Collet / Pinza		ER-11 0,5/7 mm

Ø59



R=102

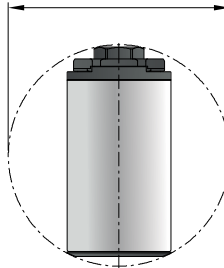


T90-1.5

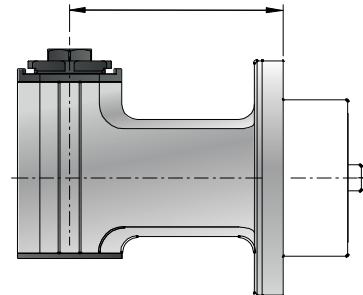
Technical data / Dati tecnici

RPM max. / Max. Velocità input	min ⁻¹	8.000
Ratio		1:1
Weight / Peso	Kg	4.3
Collet / Pinza		ER-16 1/10 mm

Ø85



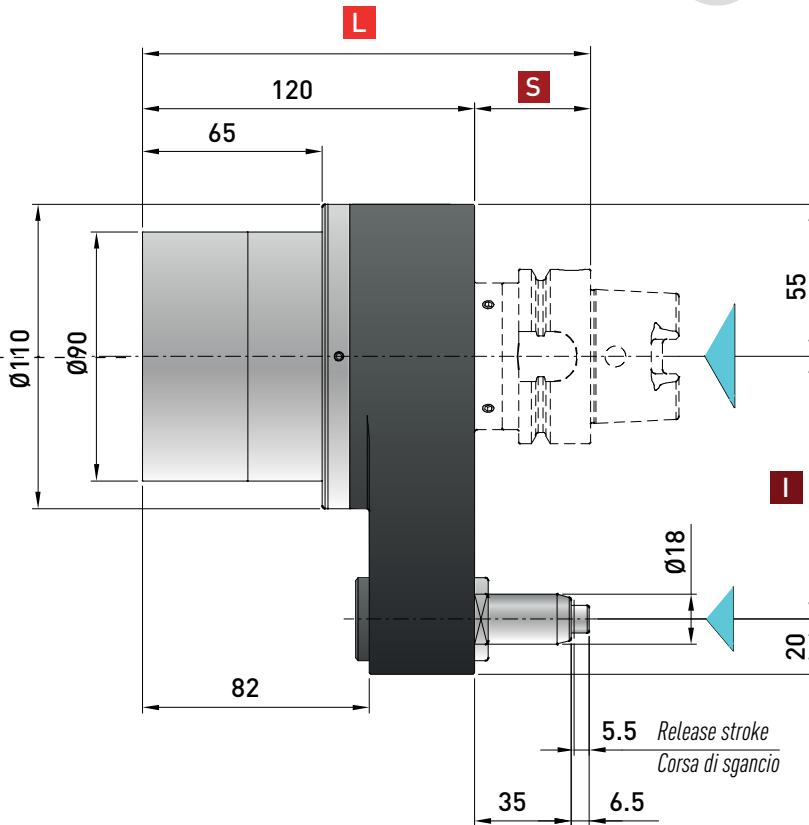
R=82



Linea **INDEX** INDEX Line

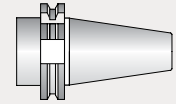
Air Input max. 6 bar to activate Index system
ingresso aria max. 6 bar per attivazione sistema Index

Weight
Peso
7.5 kg

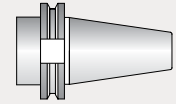


OPTIONAL DRIVE SHANK* Non interchangeable input drive shank Coni non intercambiabili

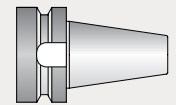
DIN-69871
ISO 40/50



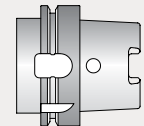
CAT
40/50



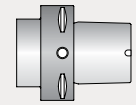
MAS-BT
40/50



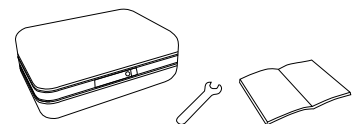
HSK
63/80/100



CAPTO
C6/C8



* STANDARD EQUIPMENT
includes:



Spindle / Cono	DIN 69871-CAT		MAS-BT		HSK		CAPTO	
Size / Grandezza	40	50	40	50	63-80	100	C5-C6	C8
I	80-(110*)	80-110	80-(110*)	80-110	80-(110*)	80-110	80-(110*)	80-110
S	35	35	35	41	42	45	38	40
L	155	155	155	161	162	165	158	160

Dual contact spindles available / Disponibilità coni a doppio contatto
*optional

TOTAL LENGTH (R+L) / LUNGHEZZA TOTALE TESTA

Spindle / Cono	DIN 69871-CAT		MAS-BT		HSK		CAPTO		
Size / Grandezza	40	50	40	50	63-80	100	C5-C6	C8	
T90-0.3 SLIMLINE	mm	270	270	270	276	277	280	273	275
T90-0.4	mm	265	265	265	271	272	275	268	270
T90-0.5	mm	257	257	257	263	264	267	260	262
T90-1.5	mm	237	237	237	243	244	247	240	242