

## ELETTROMANDRINO LEONARDO SYSTEM ELECTROSPINDLE ATC 60

### Technical data

Caratteristiche tecniche



Power  
Potenza  
**350 Watt**



RPM up to  
Velocità fino a  
**60.000/80.000 min<sup>-1</sup>**



Weight  
Peso  
**4.8 kg**



Collet  
Pinza  
**6 mm CHK  
ø 0,8 - ø 6 mm)**

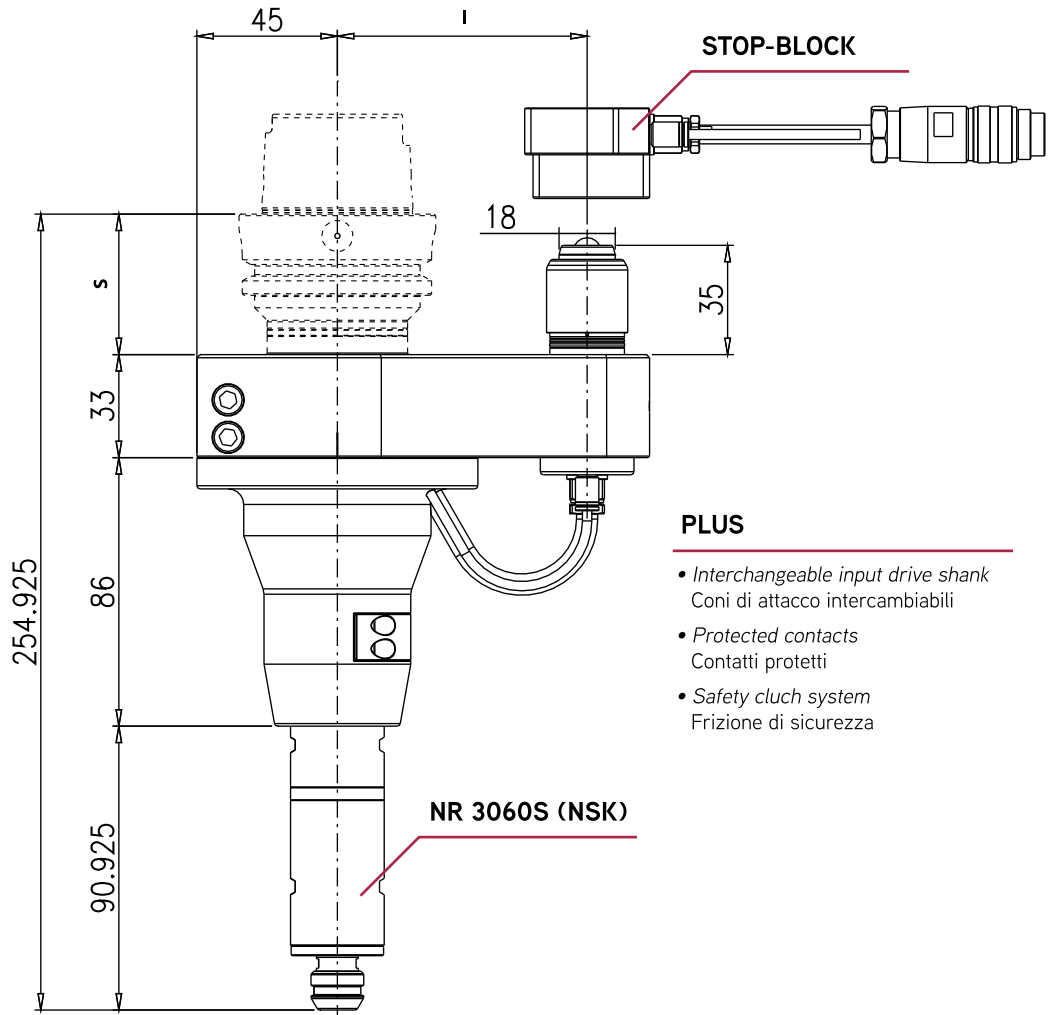
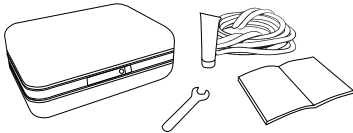


Spindle accuracy  
Precisione  
**0,002 mm**



Controller unit  
Centralina  
**ISPEED5**

**\* STANDARD EQUIPMENT includes:**



### PLUS

- Interchangeable input drive shank  
Coni di attacco intercambiabili
- Protected contacts  
Contatti protetti
- Safety clutch system  
Frizione di sicurezza



**It is strictly forbidden to rotate the machine spindle as it may cause damage to the head**  
È severamente vietato far ruotare il mandrino macchina causa danneggiamento della testa

	DIN-69871		CAT	MAS-BT		HSK		CAPTO		KM
Shank / Cono	50		50	50		63-80	100	C6	C8	63
Size / Grandezza	80-110		80-110	80-110		80-110	80-110	80-110	80-110	80-110
<b>I</b>	35		42	42		42	45	38	40	40
<b>S</b>	160		166	166		167	170	163	165	165

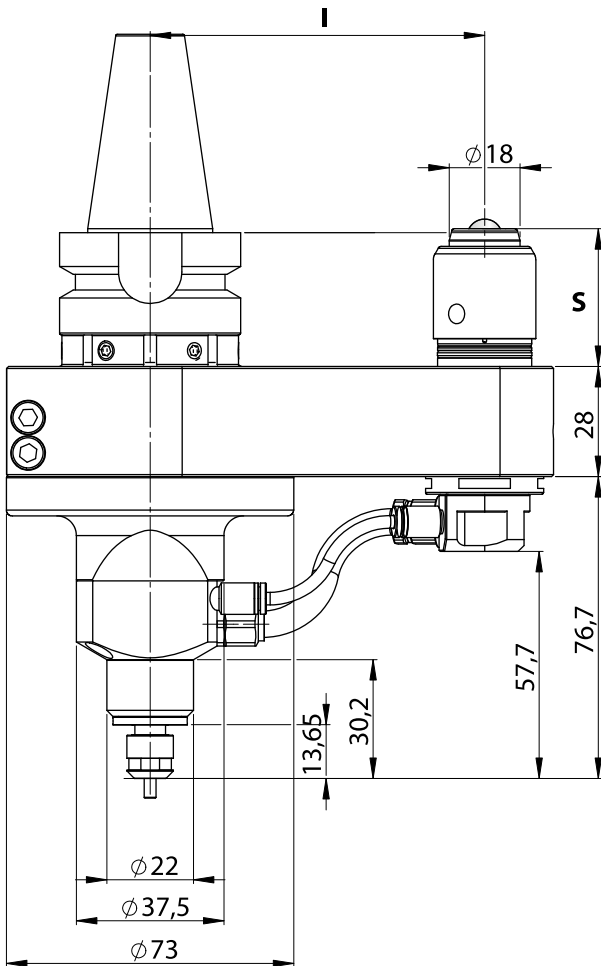
Dual contact spindles available / Disponibilità coni a doppio contatto

\*optional

**Non interchangeable input drive shank / Coni di attacco non intercambiabili**

# ELETTROMANDRINO LEONARDO SYSTEM

## ELECTROSPINDLE ATC 80



### PLUS

- Interchangeable input drive shank  
Coni di attacco intercambiabili
- Protected contacts  
Contatti protetti
- Safety clutch system  
Frizione di sicurezza

### Technical data

Caratteristiche tecniche



Power  
Potenza  
**130 Watt**



RPM up to  
Velocità fino a  
**60.000/80.000 min<sup>-1</sup>**



Weight  
Peso  
**3 kg**



Collet  
Pinza  
**4 mm CHA  
Ø 0,8 - Ø 4 mm)**

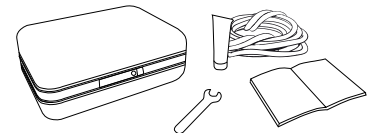


Spindle accuracy  
Precisione  
**1 µ**

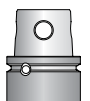
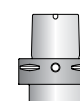
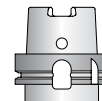
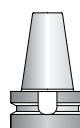
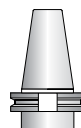
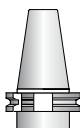


Controller unit  
Centralina  
**ISPEED3**

**\* STANDARD EQUIPMENT includes:**



**It is strictly forbidden to rotate the machine spindle as it may cause damage to the head**  
È severamente vietato far ruotare il mandrino macchina causa danneggiamento della testa



Shank / Cono	DIN-69871	CAT	MAS-BT	HSK		CAPTO		KM
Size / Grandezza	50		50	63-80	100	C6	C8	63
<b>I</b>	80-110		80-110	80-110	80-110	80-110	80-110	80-110
<b>S</b>	35		42	42	45	38	40	40
<b>L</b>	160		166	167	170	163	165	165

Dual contact spindles available / Disponibilità coni a doppio contatto

\*optional

**Non interchangeable input drive shank / Coni di attacco non intercambiabili**