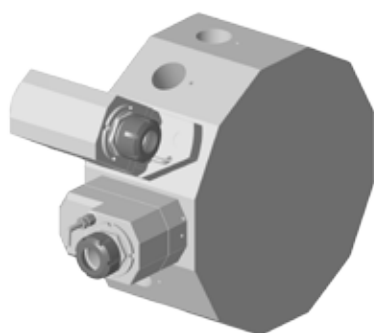
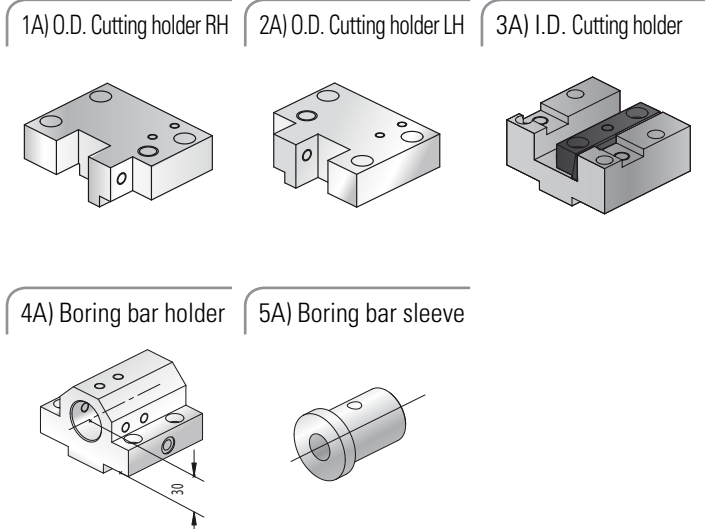


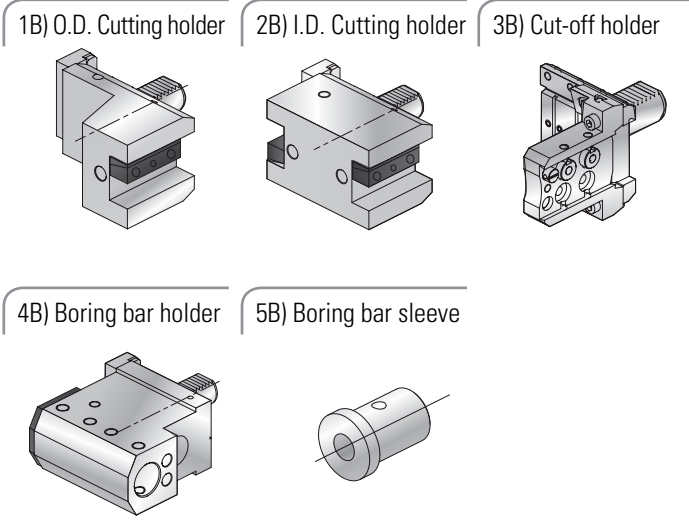
SQT10 / SQT 100/ QTN NEXUS 100



STATIC BMT TYPE



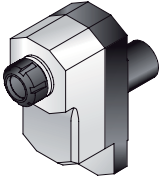
STATIC VDI TYPE



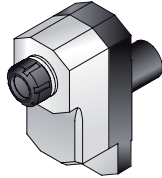
BMT TYPE Technical Data / Dati Tecnici	Code Codice	VDI TYPE Technical Data / Dati Tecnici	Code Codice
1A) O.D. CUTTING HOLDER RH 20X20mm 1A) Portautensile per esterni Dx 20x20mm	AMZ.SQ1.0D20.R	1B) O.D. CUTTING HOLDER 20X20mm 1B) Portautensile per esterni 20x20mm	AMZ.QT1.0D20
2A) O.D. CUTTING HOLDER LH 20X20mm 2A) Portautensile per esterni Sx 20x20mm	AMZ.SQ1.0D20.L	2B) I.D. CUTTING HOLDER 20X20mm 2B) Portautensile per interni 20x20mm	AMZ.QT1.ID20
3A) I.D. CUTTING HOLDER 20X20mm 3A) Portautensile per interni 20x20mm	AMZ.SQ1.ID20	3B) CUT OFF HOLDER 26mm 3B) Portalama 26mm	AMZ.QT1.CO26
4A) BORING BAR HOLDER 32mm 4A) Portabareno 32mm	AMZ.SQ1.BB32	4B) BORING BAR HOLDER 32mm 4B) Portabareno 32mm	AMZ.QT1.BB32
5A) BORING BAR SLEEVE 5A) Bussole di riduzione	AMZ.SQ1.RDX	5B) BORING BAR SLEEVE 5B) Bussole di riduzione	AMZ.QT1.RDX

LIVE TOOLS

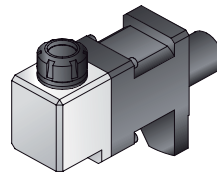
1A) Axial MA-2,5 R



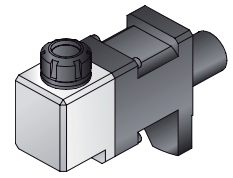
1B) Axial MA-2,5 R C 70 Bar



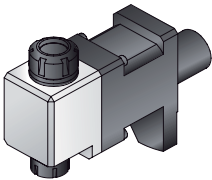
2A) Radial M90-2,5



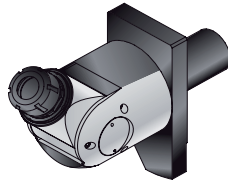
2B) Radial M90-2,5 C 70 Bar



3) Radial M90-2,5 2U



4) Adjustable MCU-1,5



Technical Data / Dati Tecnici

**Code
Codice**

1A) AXIAL MA-2,5 R
1A) Assiale MA-2,5 R

AMZ.QT1.0400

1B) AXIAL MA-2,5 R C 70 Bar
1B) Assiale MA-2,5 C 70 Bar R

AMZ.QT1.040C

2A) RADIAL M90-2,5
2A) Radiale M90-2,5

AMZ.QT1.0200

Technical Data / Dati Tecnici

**Code
Codice**

2B) RADIAL M90-2,5 C 70 Bar
2B) Radiale M90-2,5 C 70 Bar

AMZ.QT1.020C

3) RADIAL M90-2,5 2U
3) Radiale M90-2,5 2U

AMZ.QT1.0300

4) ADJUSTABLE MCU-1,5
4) Orientabile MCU-1,5

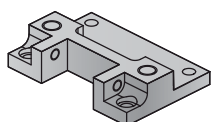
AMZ.QT1.0500

QUICK TURN NEXUS QTN 200 II – 250 II M / MS / MY / MSY – SQT 15 / 18M

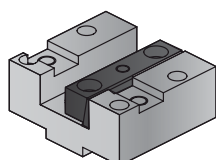


STATIC BMT TYPE

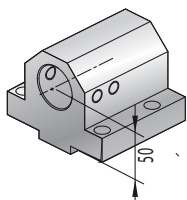
1A) O.D. Cutting holder



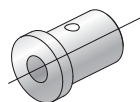
2A) I.D. Cutting holder



3A) Boring bar holder

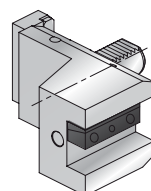


4A) Boring bar sleeve

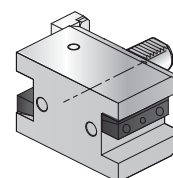


STATIC VDI TYPE

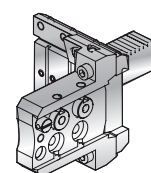
1B) O.D. Cutting holder



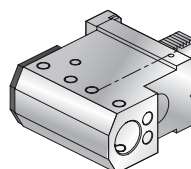
2B) I.D. Cutting holder



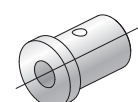
3B) Cut-off holder



4B) Boring bar holder



5B) Boring bar sleeve



BMT TYPE

Technical Data / Dati Tecnici

1A) O.D. CUTTING HOLDER 25X25mm

1A) Portautensile per esterni 25x25mm

AMZ.SQ2.OD25

2A) I.D. CUTTING HOLDER 25X25mm

2A) Portautensile per interni 25x25mm

AMZ.SQ2.ID25

3A) BORING BAR HOLDER 40mm

3A) Portabareno 40mm

AMZ.SQ2.BB40

4A) BORING BAR SLEEVE

4A) Bussole di riduzione

AMZ.SQ2.RDX

VDI TYPE

Technical Data / Dati Tecnici

1B) O.D. CUTTING HOLDER 25X25mm

1B) Portautensile per esterni 25x25mm

AMZ.QT2.OD25

2B) I.D. CUTTING HOLDER 25X25mm

2B) Portautensile per interni 25x25mm

AMZ.QT2.ID25

3B) CUT OFF HOLDER 32mm

3B) Portalama 32mm

AMZ.QT2.CO32

4B) BORING BAR HOLDER 40mm

4B) Portabareno 40mm

AMZ.QT2.BB40

5B) BORING BAR SLEEVE

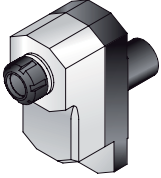
5B) Bussole di riduzione

AMZ.QT2.RDX

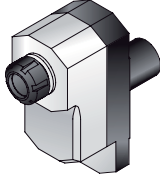
QUICK TURN NEXUS QTN 200 II – 250 II M / MS / MY / MSY – SQT 15 / 18M

LIVE TOOLS

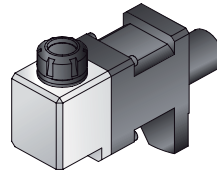
1A) Axial MA-3,5 R



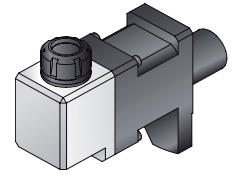
1B) Axial MA-3,5 R C 70 Bar



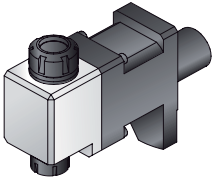
2A) Radial M90-3,5



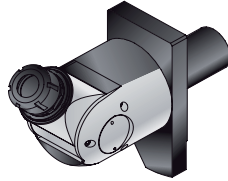
2B) Radial M90-3,5 C 70 Bar



3) Radial M90-3,5 2U



4) Adjustable MCU-2,5



Technical Data / Dati Tecnici

**Code
Codice**

1A) AXIAL MA-3,5 R
1A) Assiale MA-3,5 R

AMZ.QT2.0400

1B) AXIAL MA-3,5 R C 70 Bar
1B) Assiale MA-3,5 C 70 Bar R

AMZ.QT2.040C

2A) RADIAL M90-3,5
2A) Radiale M90-3,5

AMZ.QT2.0200

Technical Data / Dati Tecnici

**Code
Codice**

2B) RADIAL M90-3,5 C 70 Bar
2B) Radiale M90-3,5 C 70 Bar

AMZ.QT2.020C

3) RADIAL M90-3,5 2U
3) Radiale M90-3,5 2U

AMZ.QT2.0300

4) ADJUSTABLE MCU-2,5
4) Orientabile MCU-2,5

AMZ.QT2.0500