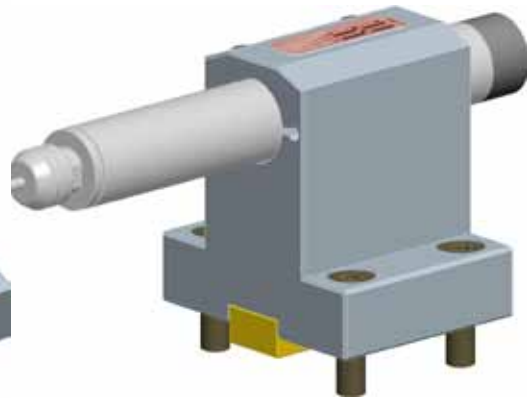
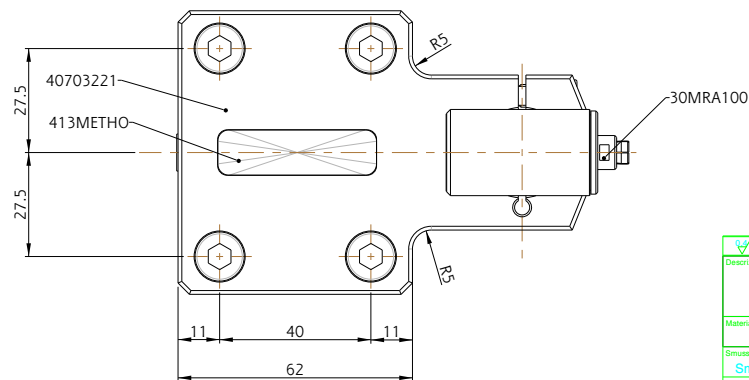
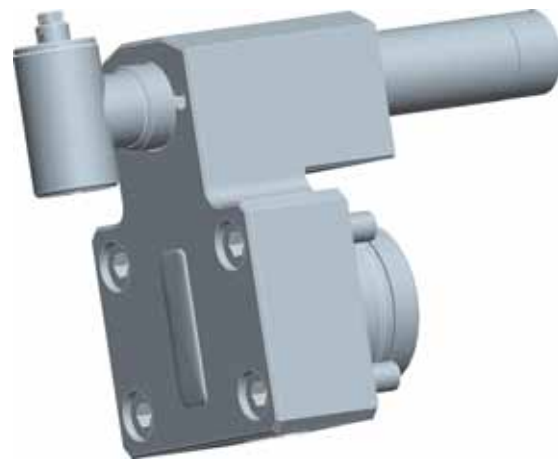
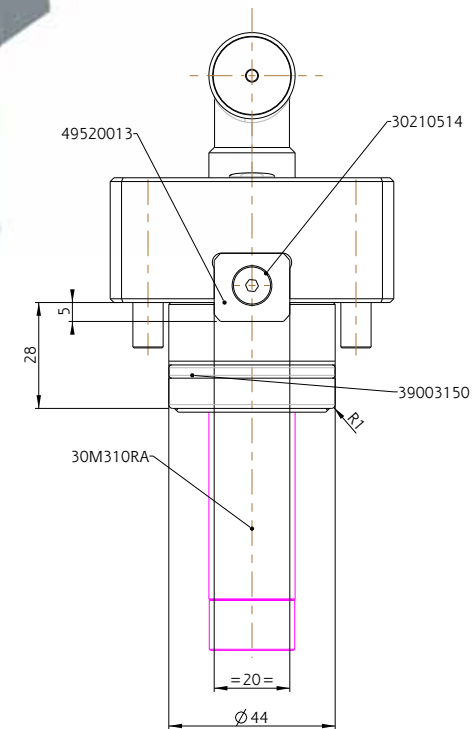
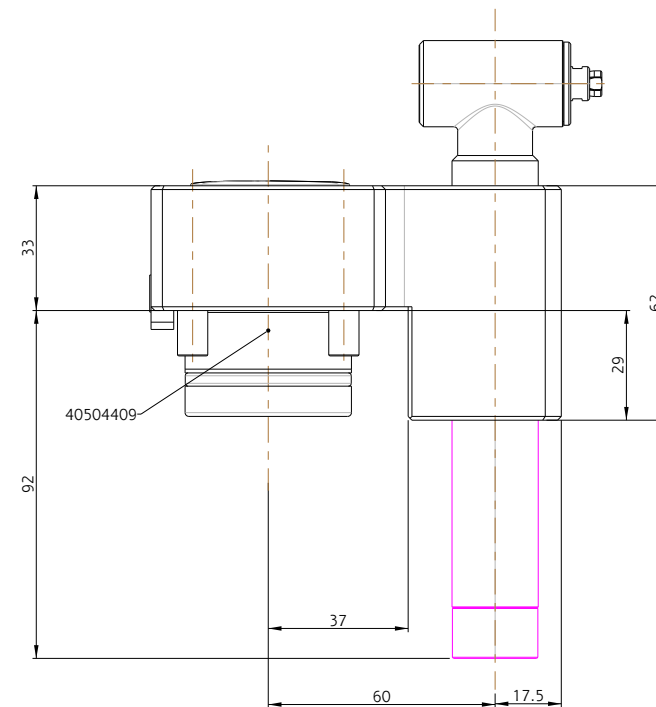
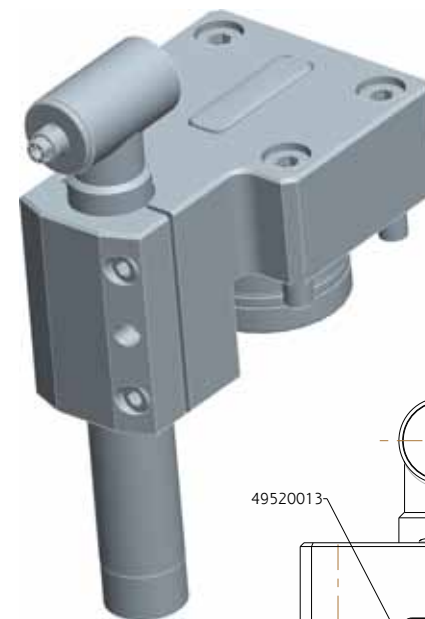
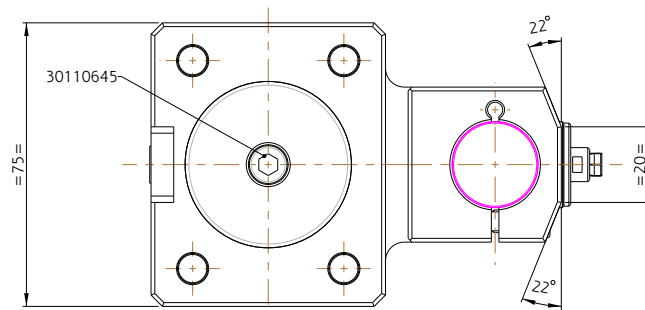
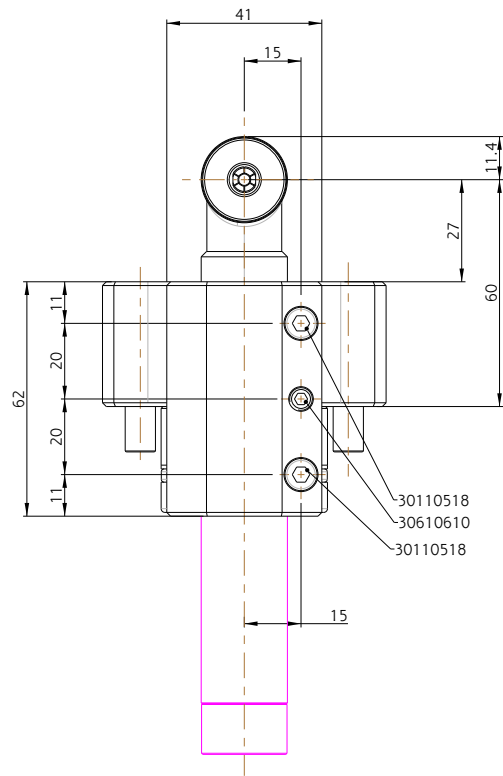


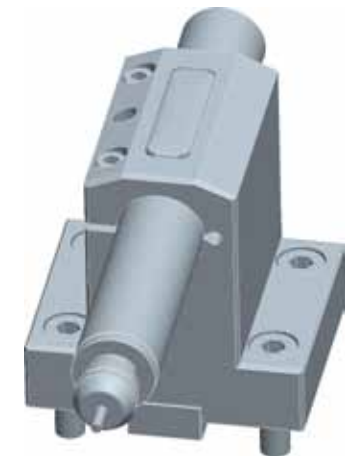
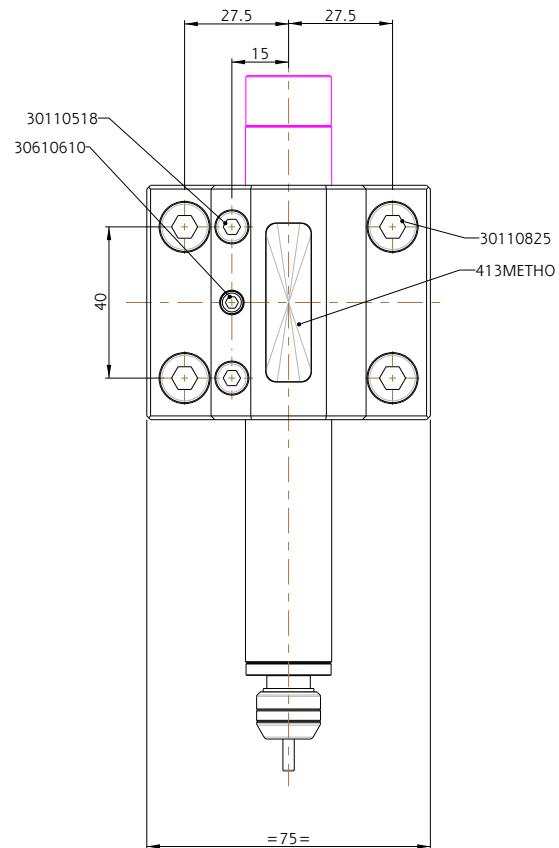
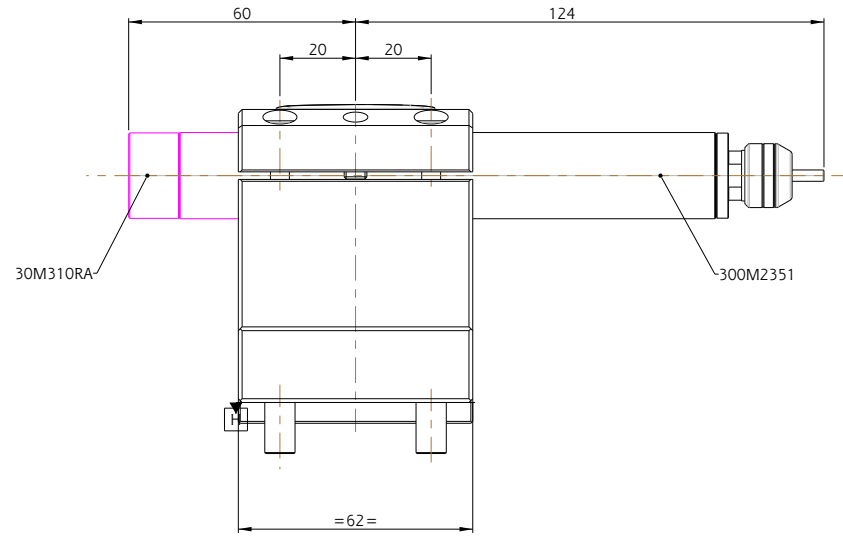
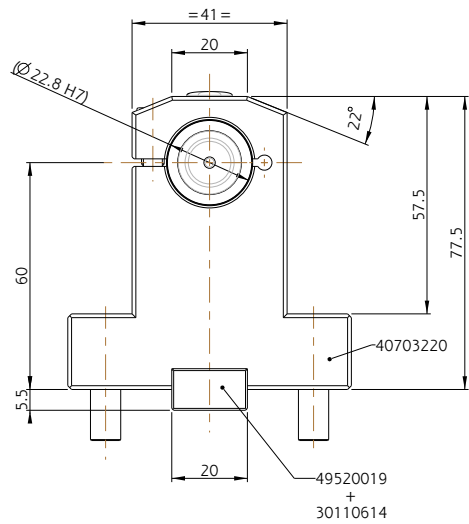


Applicazioni speciali con supporti Nakanishi
Special application with Nakanishi products

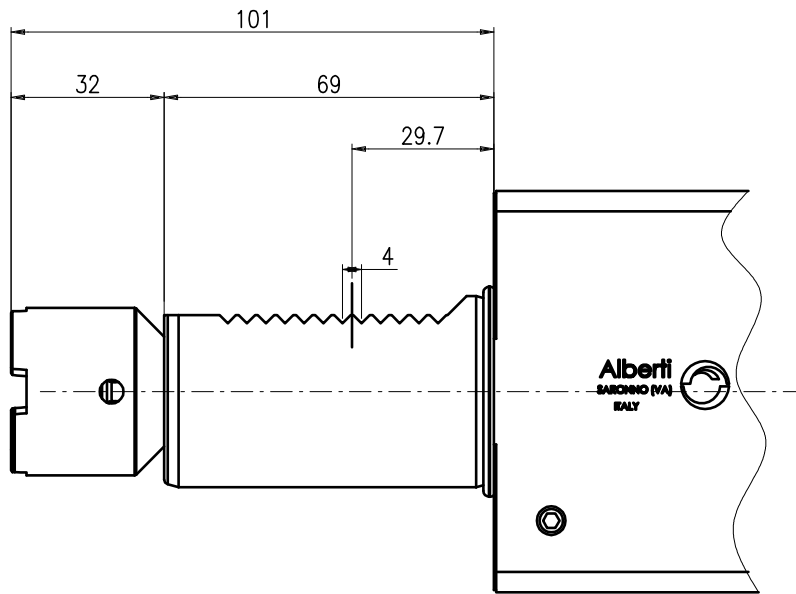
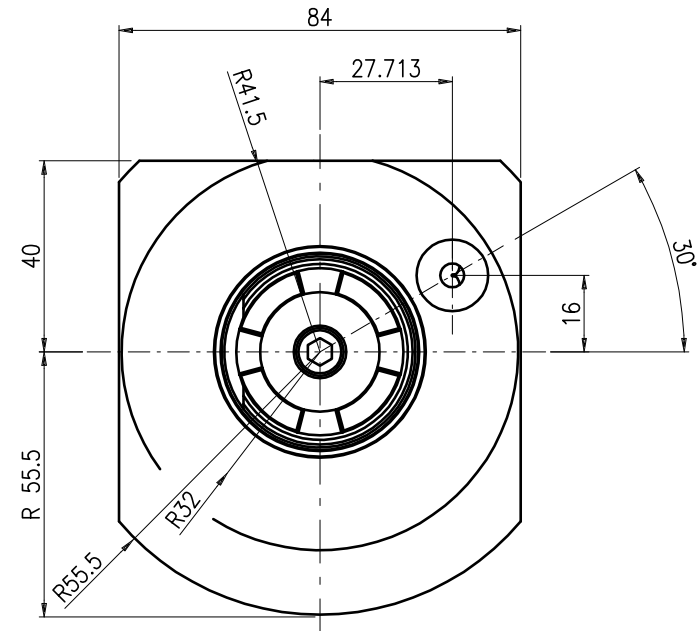
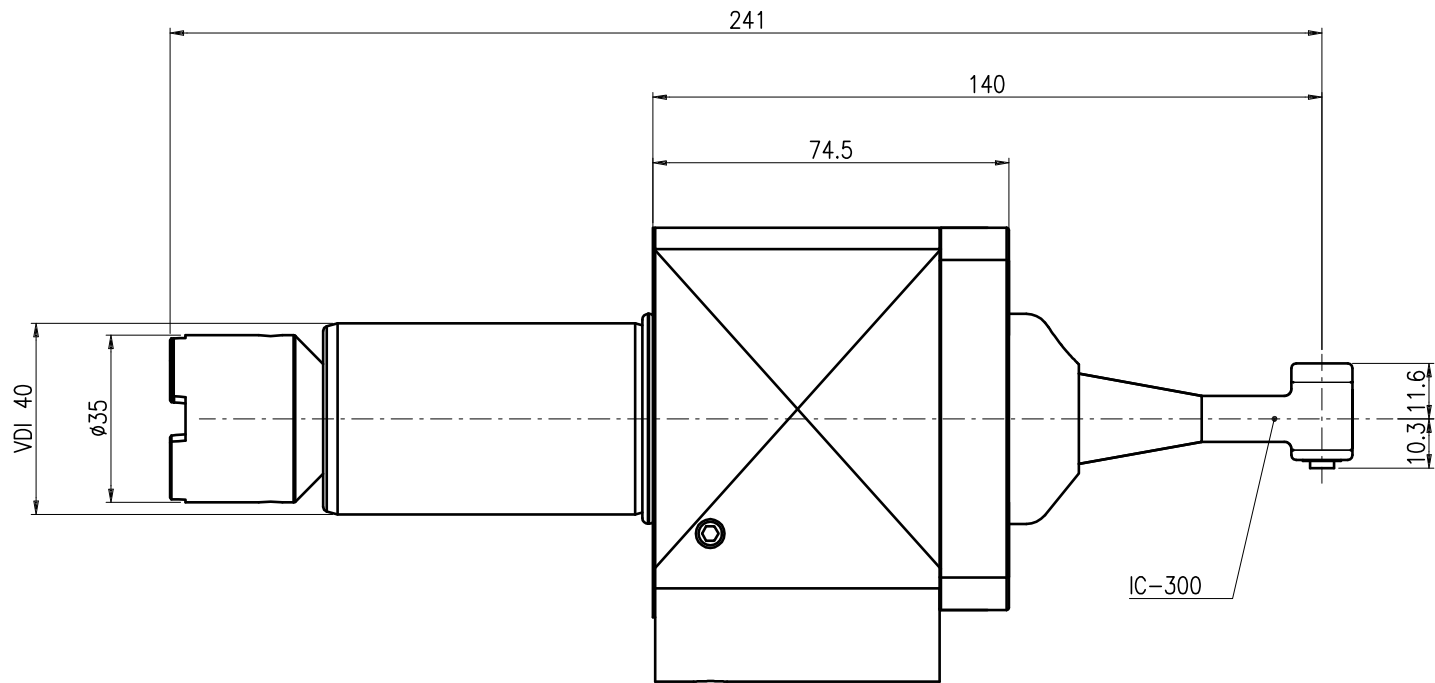




X = Sovrametallo per rettifica in decimi di mm. Codice di esempio: H1.....		Descrizione <i>Type</i> AIR DRIVEN HOLDER FACE 30.000 rpm WT-100		Alberti Umberto Teste angolari e motorizzazioni via E. LOREO, 47100 (SARONNOVA) e-mail: info@alberti-umberto.it Tel. (02) 9670268 (2 linee r.a.) FAX (02) 9670260			
Materiale <i>Material</i>	Trattamento termico <i>Thermal treatment</i>	Durezza <i>Hardness</i>	Scala <i>Scale</i>	Disegnato <i>Drawn</i>	Verificato <i>Check</i>	Data <i>Date</i>	Codice <i>Code</i>
Smusso gen. <i>Chamfer</i> Sm.0.5x45°	0,1mm		1:1	Valvassori		22-Oct-08	5.07.03.22.1
Peso [Kg] <i>Weight</i> 43592.748	Unità di misura <i>Unit</i> mm	Rugosità <i>Surface finish</i> 1.6/0.8		Pro. <i>Engineer</i> Violante 2.0	Modifiche <i>Updates</i>	Disegno originale in formato A2 I DATI CONTENUTI POTRANNO SUBIRE VARIAZIONI SENZA PREAVVISO ACCORDING TO THE LAW IT IS PROHIBITED THE REPRODUCTION OF THIS DRAWING WITHOUT OUR AUTHORIZATION DATA ARE SUBJECT TO TECHNICAL MODIFICATIONS WITHOUT NOTICE	



X = Sovrametallo per rettifica in decimi di mm. Codice di esempio: H1.....									
AIR DRIVEN HOLDER CROSS 30.000 rpm FOR WT-100								Alberti Umberto Teste angolari e motorizzazioni Via E. GREGG 47 21047 SARGHEMO (VA) e-mail: info@albertumbero.it Tel. (02) 96703588 (2 linee r.a.) FAX (02) 96703620	
Materiale Material		Trattamento termico Thermal treatment		Durezza Hardness		Data Date		Codice Code	
Smusso gen. Chamfer		Scala Scale		Disegnato Drawn		Verificato Check		21-Oct-08	
Sm.0.5x45°		0,1mm		1:1		Valvassori		5.07.03.22.0	
Peso [Kg] Weight		Unità di misura Unit		Rugosità Surface finish		Pro Engineer		Modifiche Updates	
846.260		mm		1.6/ 0.8/ ✓/ ✓		Wildfire 3.0			
<small>A TERMINI DI LEGGE È VIETATA LA RIPRODUZIONE DI QUESTO DISEGNO SENZA LA NOSTRA AUTORIZZAZIONE ACCORDING TO THE LAW IT IS PROHIBITED THE REPRODUCTION OF THIS DRAWING WITHOUT OUR AUTHORIZATION</small>								<small>IDATI CONTENUTI POTRANNO SUBIRE VARIAZIONI SENZA PREAVVISO DATA ARE SUBJECT TO TECHNICAL MODIFICATIONS WITHOUT NOTICE</small>	



Disegno per approvazione
Approval Drawing

Approvato / Approved

Data / Date/..../....

Firma / Signature

Note:


Da definire / Redefine

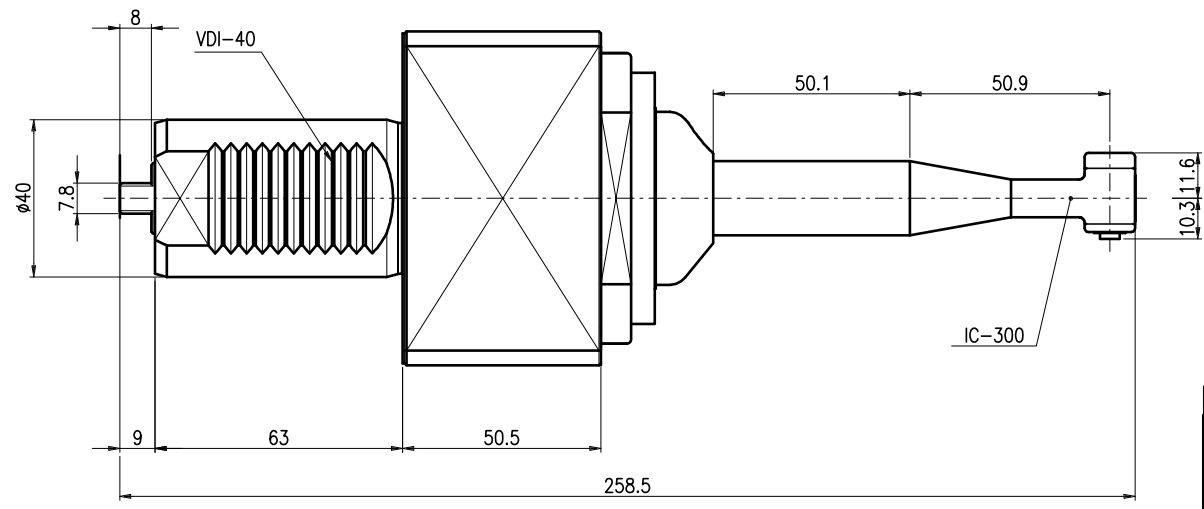
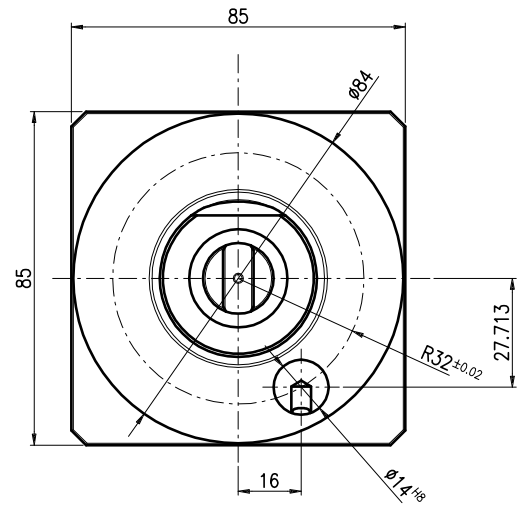
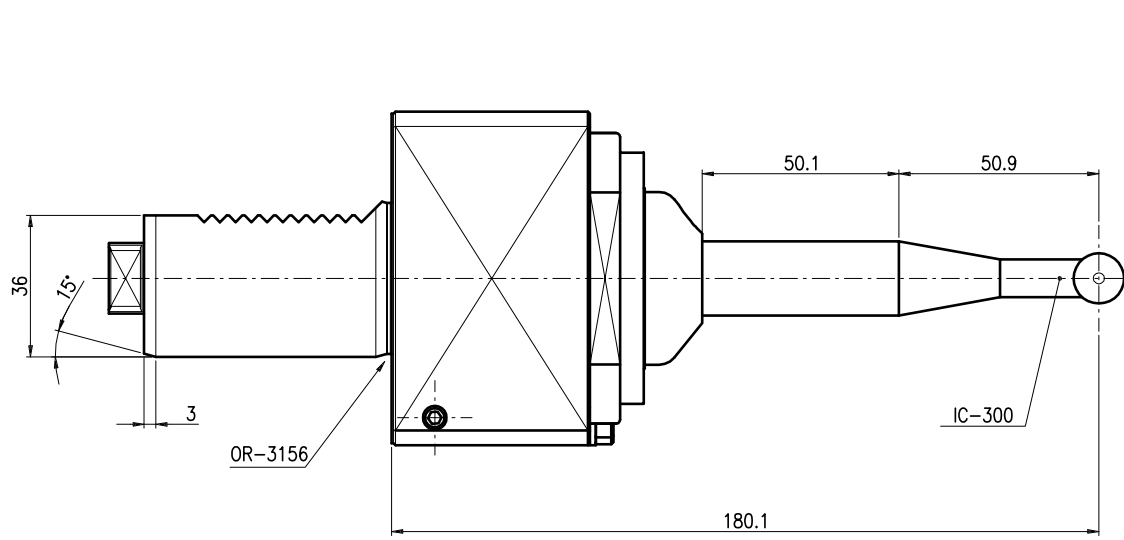
Data / Date/..../....

Firma / Signature

Note:

$\sqrt{\text{X}}$ X-sovrametallo per rettifica in decimi di mm.

MOTORIZZATO MA-IC300 OKUMA LB-400		 Alberti Umberto Teste angolari e motorizzazioni Via E.H.GRIEG n°7 21047 SARONNO(VA) e-mail: alberti@net-one.it Tel. (02) 96703588 (2 linee r.a.) FAX (02) 96703620	
MODIFICHE	MATERIALE	TRATTAMENTO	FIRMA
			<i>Pinini</i>
VERIF.	DATA	VERIF.	DATA
	22.01.09		
SMUSSARE SPIGOLI	TOLL. GENER.	SCALA	RUGOSITA'
		1:1	✓✓✓✓
			NUMERO DISEGNO - CODICE
			9.91.M.40.00



Disegno per approvazione
Approval Drawing

Approvato / Approved

Data / Date/..../....

Firma / Signature

Note:

Da definire / Redefine

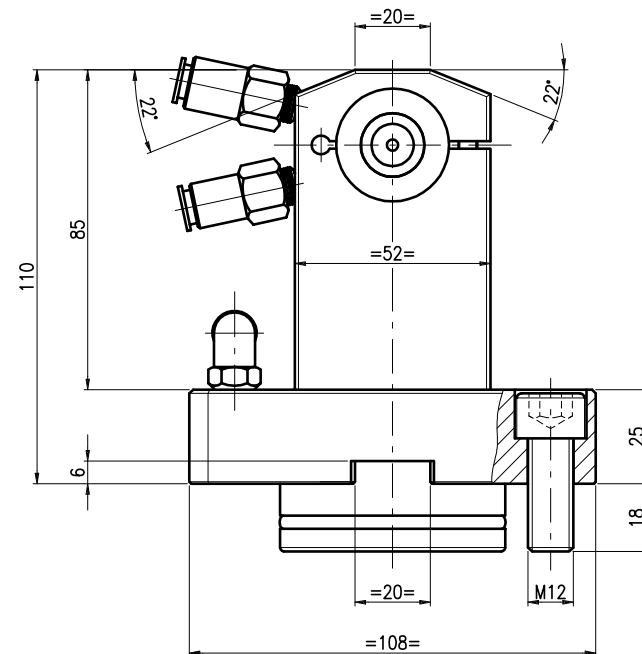
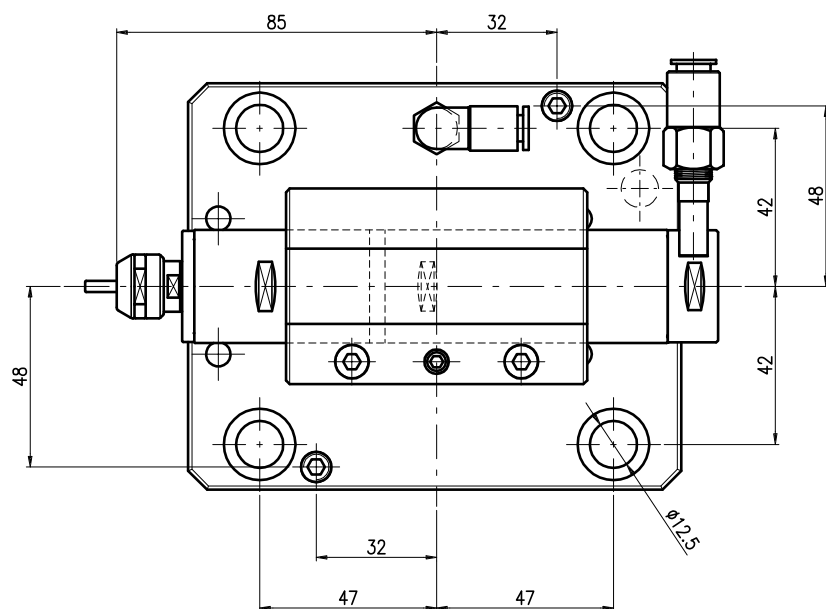
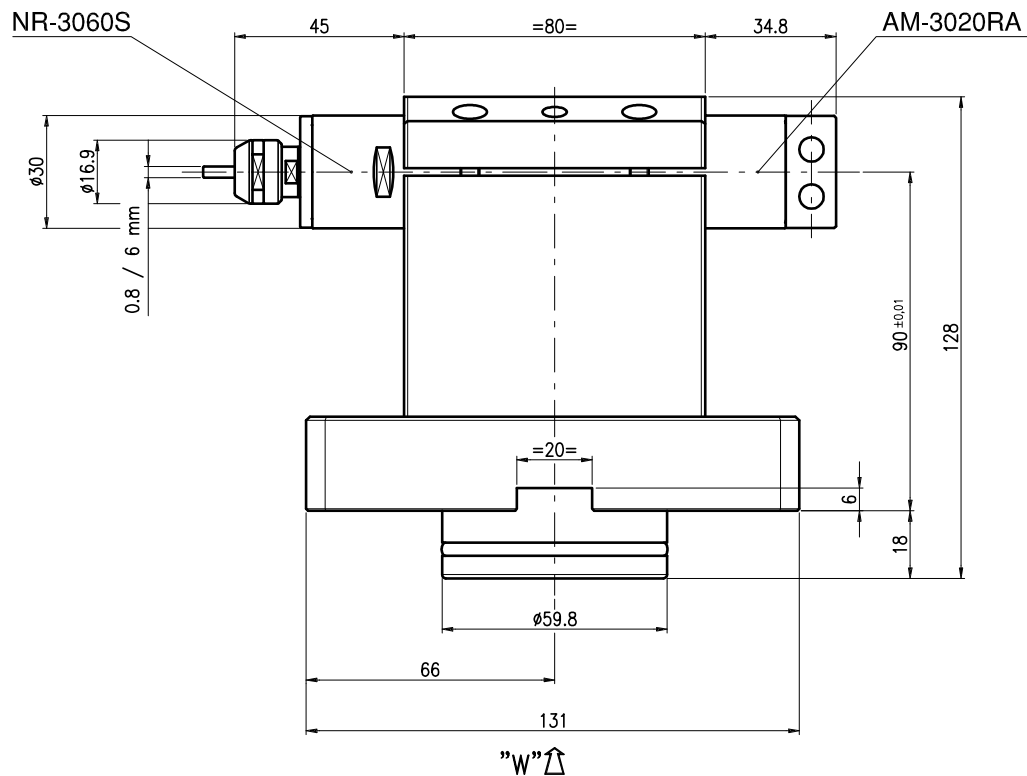
Data / Date/..../....

Firma / Signature

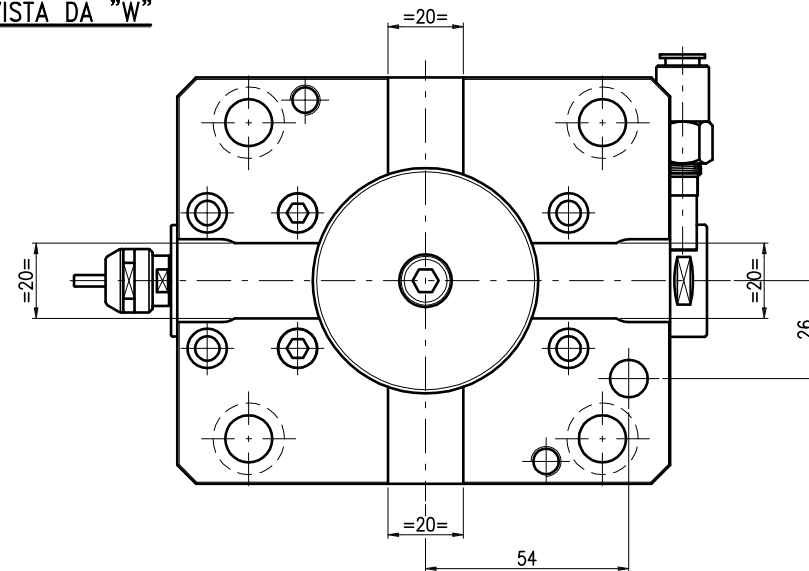
Note:

0.4x X=sovrametallo per rettifica in decimi di mm.

MA-IC300 VDI-40				Alberti Umberto Teste angolari e motorizzazioni Via E.H.GRIEG n°7 21047 SARONNO(VA) e-mail: alberti@net-one.it Tel. (02) 96703586 (2 linee r.a.) FAX (02) 96703620			
DIN 1809							
MODIFICHE	MATERIALE	TRATTAMENTO		FIRMA	VERIF.	DATA	REF. ORD.
				c.b.		26-06-09	
SMUSSARE SPIGOLI	TOLL. GENER.	SCALA	RUGOSITA'			NUMERO DISEGNO - CODICE	
		1:1				9.91.M.40.01	



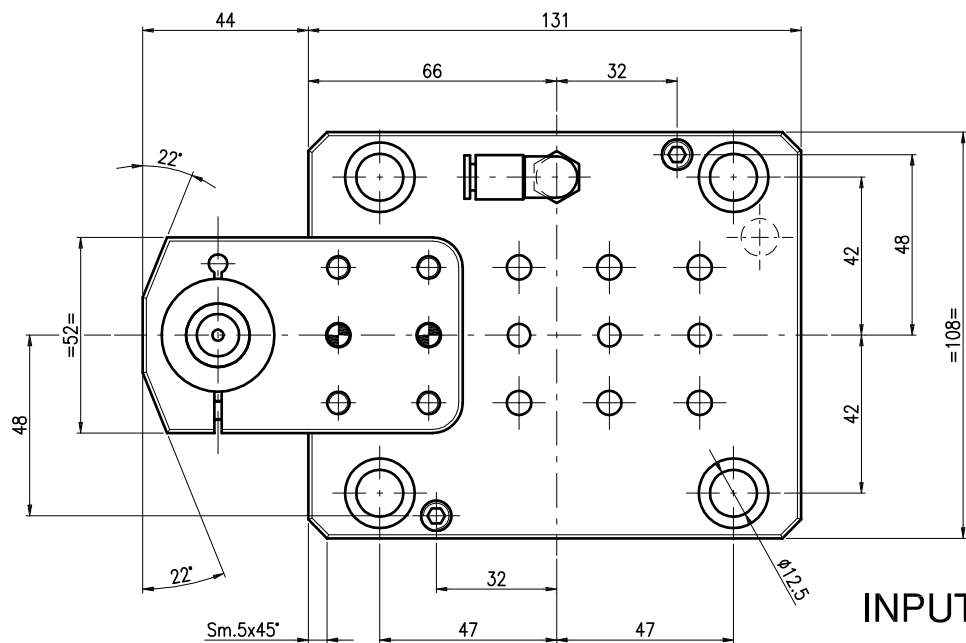
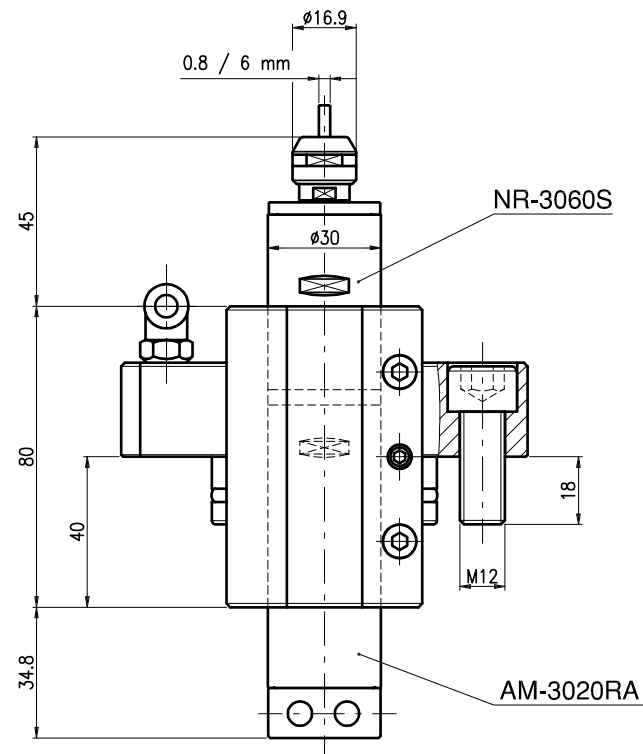
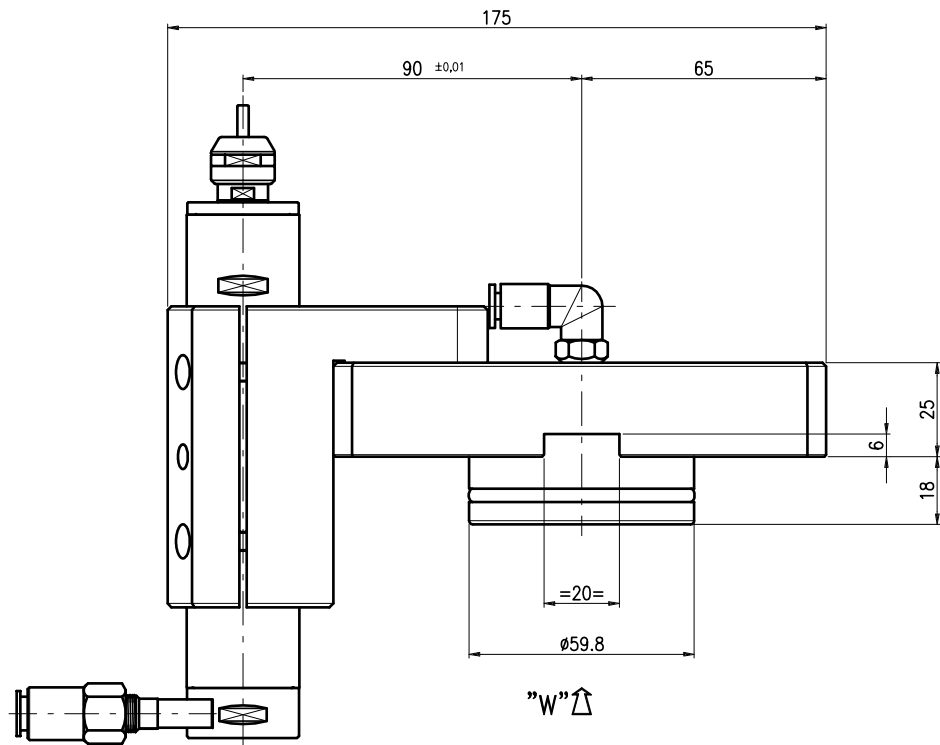
VISTA DA "W"



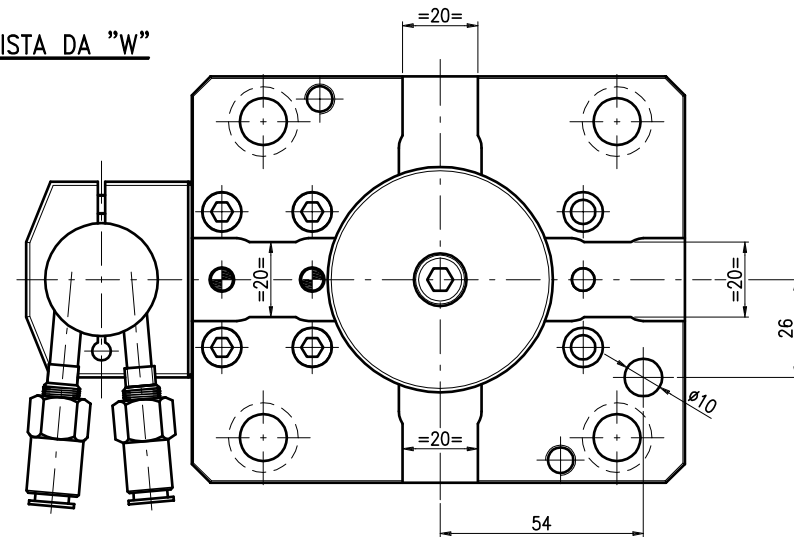
INPUT - 18.000 GIRI / RPM
 OUTPUT - 18.000 GIRI / RPM

0.4x X-sovrametallo per rettifica in decimi di mm.

SUPPORTO RADIALE Ø30 PER MANIPOLO NSK MORI SEIKI NL				Alberti Umberto Teste angolari e motorizzazioni Via E.H.GREG n°7 21047 SARONNO(VA) e-mail: alberti@net-one.it Tel. (02) 96703586 (2 linee r.a.) FAX (02) 96703620			
MODIFICHE	MATERIALE	TRATTAMENTO	FIRMA	VERIF.	DATA	RF. ORD.	
			Carnovale		03/02/09		
SMUSSARE SPIGOLI	TOLL. GEN.	SCALA	RUGOSITA'	NUMERO DISEGNO - CODICE			
		1:1	✓✓✓✓	9.07.1.4.30.0			




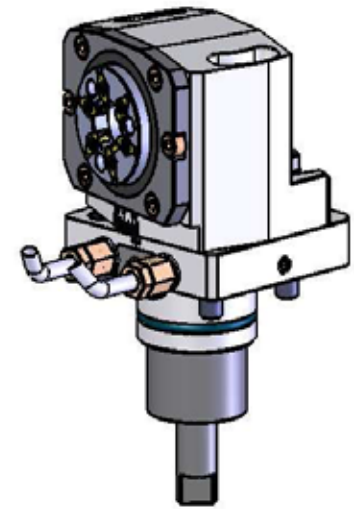
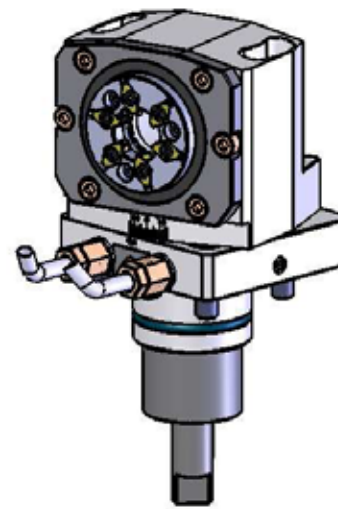
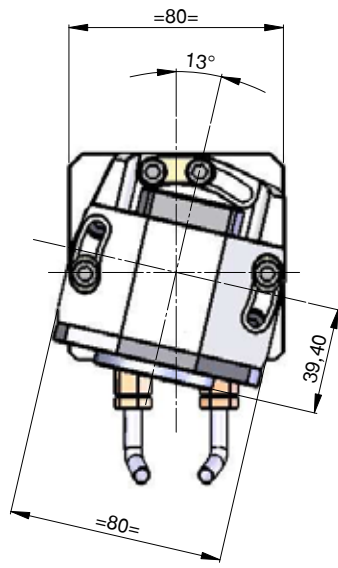
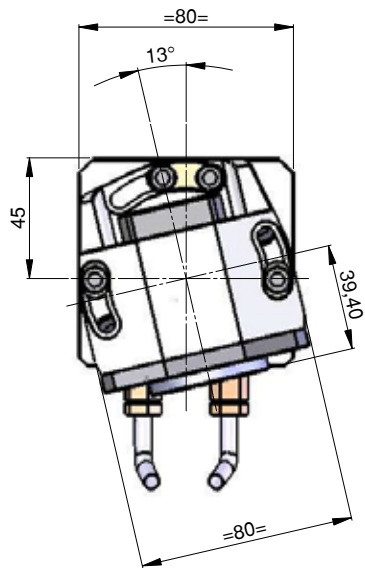
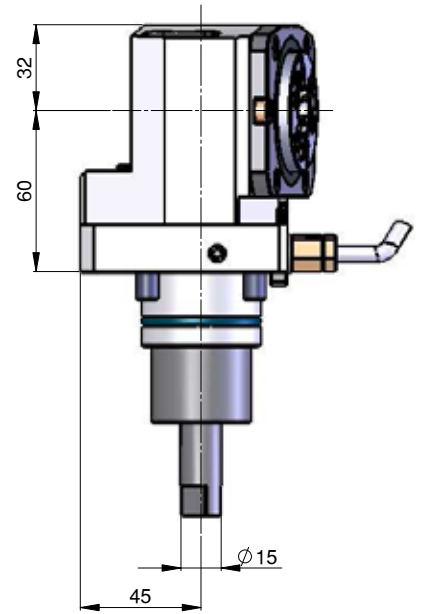
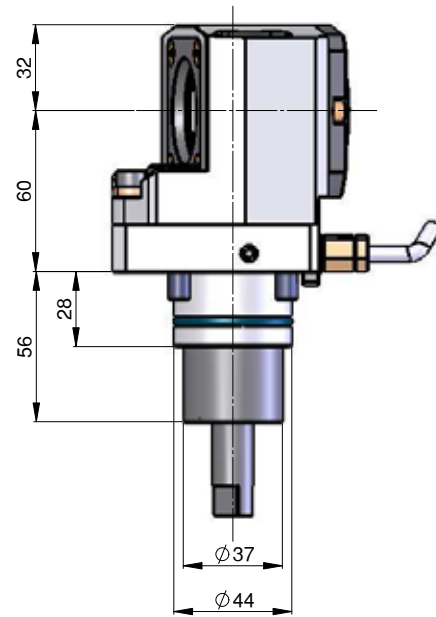
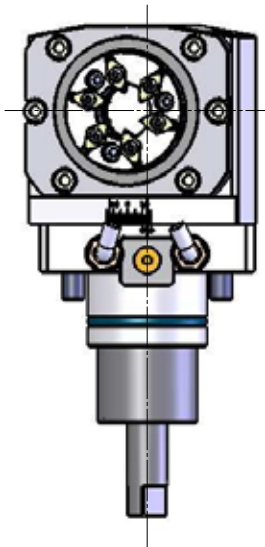
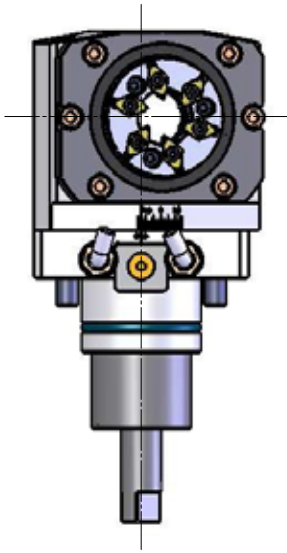
VISTA DA "W"



INPUT - 18.000 GIRI / RPM
 OUTPUT - 18.000 GIRI / RPM

0.4^x X-sovrametallo per rettifica in decimi di mm.

SUPPORTO ASSIALE Ø30 PER MANIPOLO NSK MORI SEIKI NL				 Alberti Umberto Teste angolari e motorizzazioni Via E.H.GREGG n°7 21047 SARONNO(VA) e-mail: alberti@net-one.it Tel. (02) 96703566 (2 linee r.a.) FAX (02) 96703620			
MODIFICHE	MATERIALE	TATTAMENTO	FIRMA	VERIF.	DATA	REF. ORD.	
			Carnovale		03/02/09		
SMUSSARE SPIGOLI	TOLL. GENER.	SCALA	RUGOSITA'	NUMERO DISEGNO - CODICE			
		1:1	✓✓✓✓	9.07.1.4.30.1			



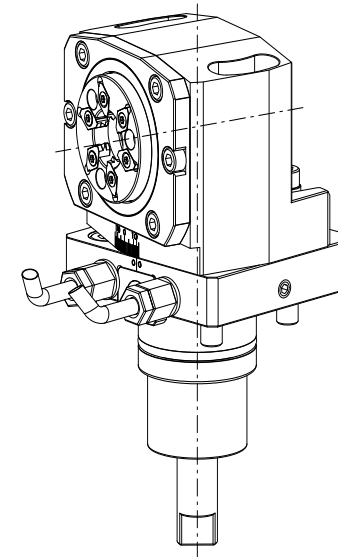
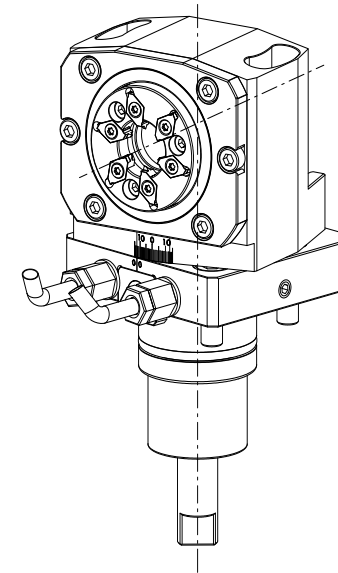
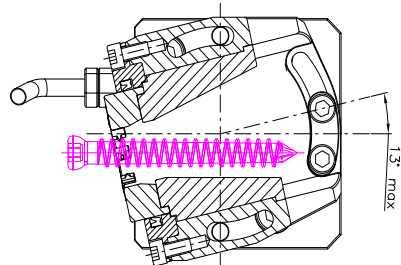
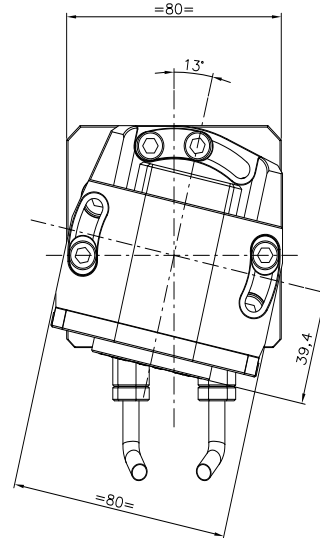
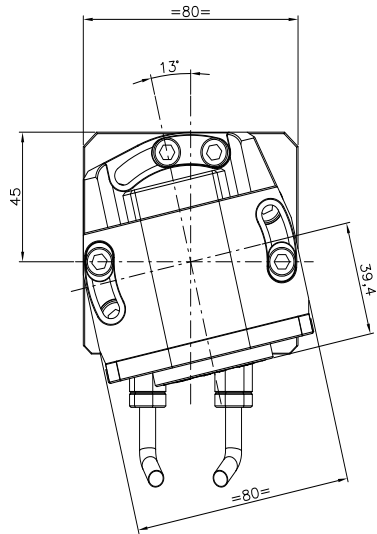
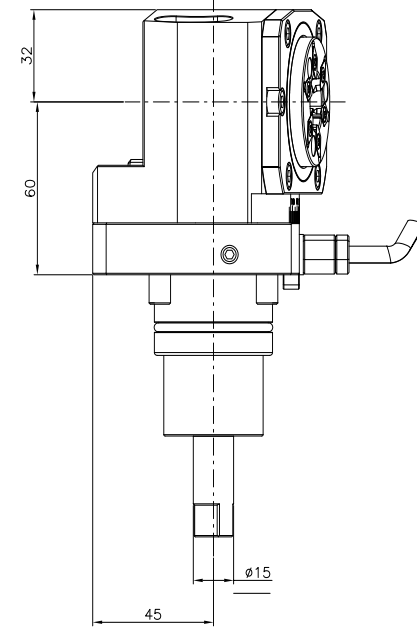
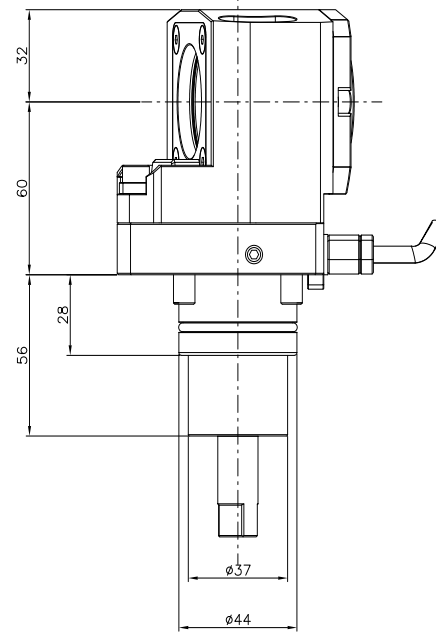
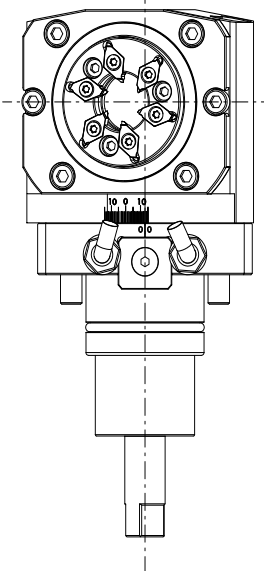
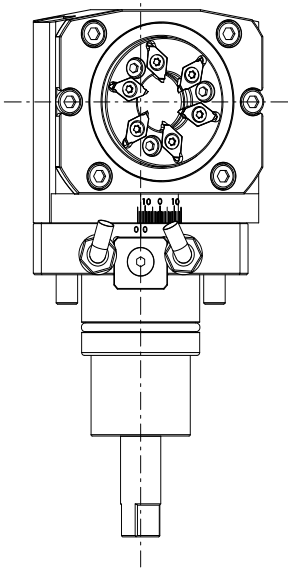
$\sqrt{\text{X}}$ X=sovrametallo per rettifica in decimi di mm.

MOTORIZZATO TURBOFILETTARE
NAKAMURA WT-100

Alberto Umberto
 S.p.A.

04-01-09	04-01-09
1:1	

A meno di 80° e sotto la tolleranza di questo disegno, sotto la punta approssimativa.

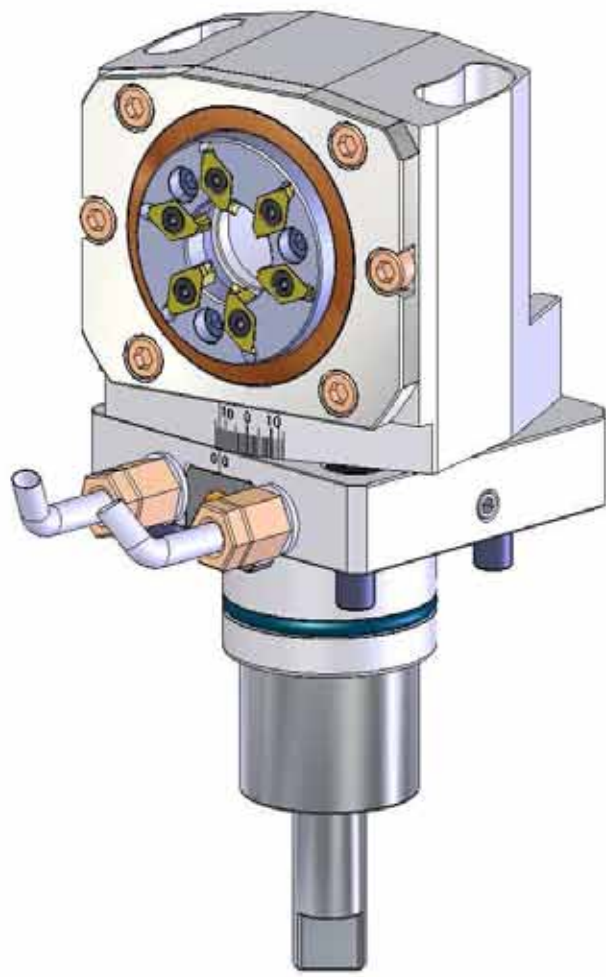


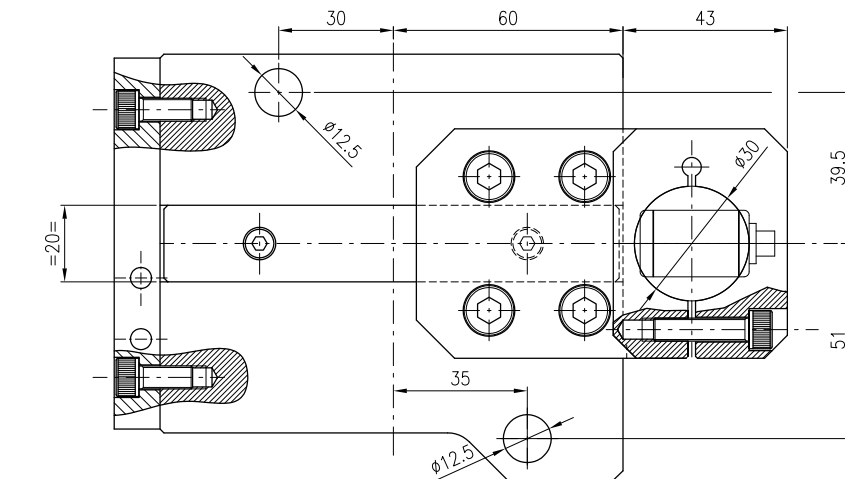
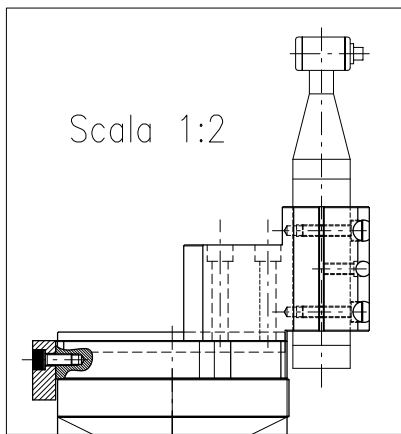
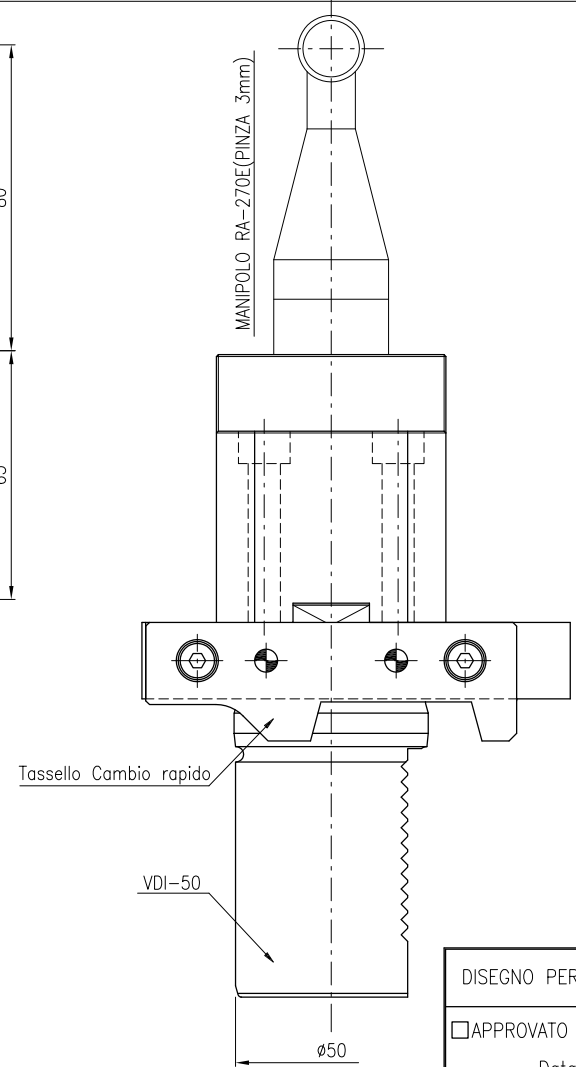
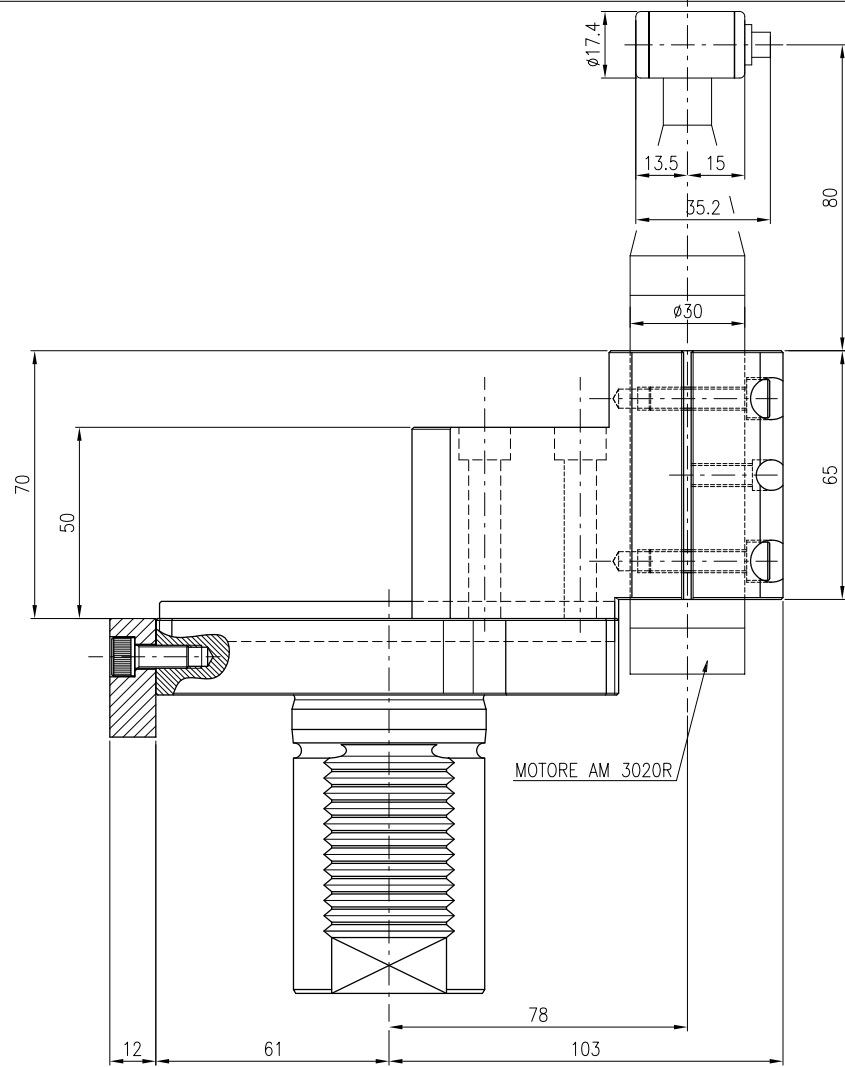
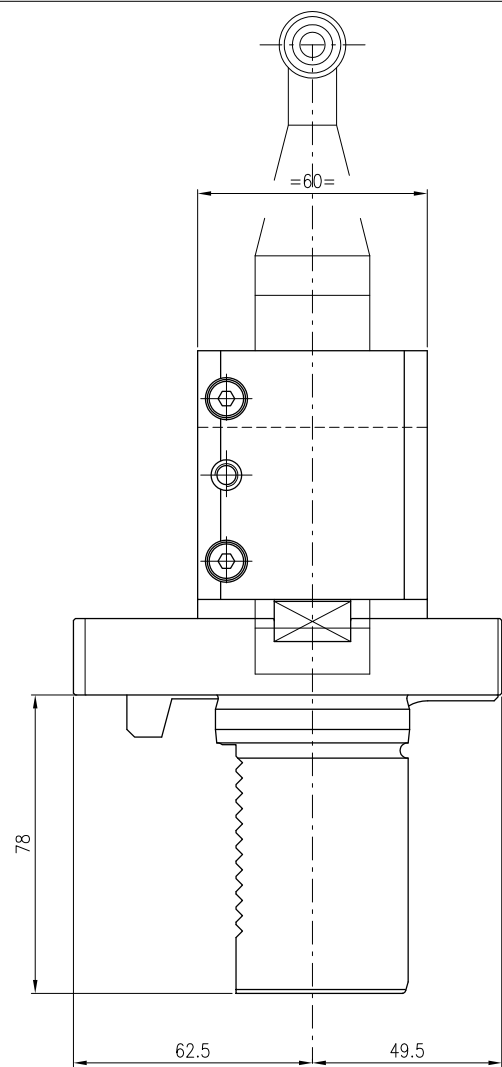
TECNICAL DATA

- Rt. 1:1,5
- RPM. max. 4.000 g/
- Max axial load 450 N
- Torque 10 Nm
- Adjustable tool drive from -13° to +13°
- Direction of rotation opposite to machine spindle

		Alberto Umberto Industrie Argomenti e Motorizzazioni Via EUGENIO IV 2047 SARMONOVA 41010 ALBERTO UMBERTO (MO)	
Tel. 052 9672286 22 linee r.a.d. Fax 052 9672280		Tel. 052 9672286 22 linee r.a.d. Fax 052 9672280	
MOTORIZZATO TURBOFILETTARE NAKAMURA WT-100		FORM. 04-01-09	
NOME ALBERTI UMBERTO	MODELLO WT-100	DATA 04-01-09	REV. 001
PRESSURE SPINDLE 10	TOOL HOLDER 10	SCALE 1:1	PRODOTTO IN ITALIA

A termini di legge è vietata la riproduzione di questo disegno senza la nostra autorizzazione.





DISEGNO PER APPROVAZIONE.

APPROVATO
 Data:/..../....
 Firma

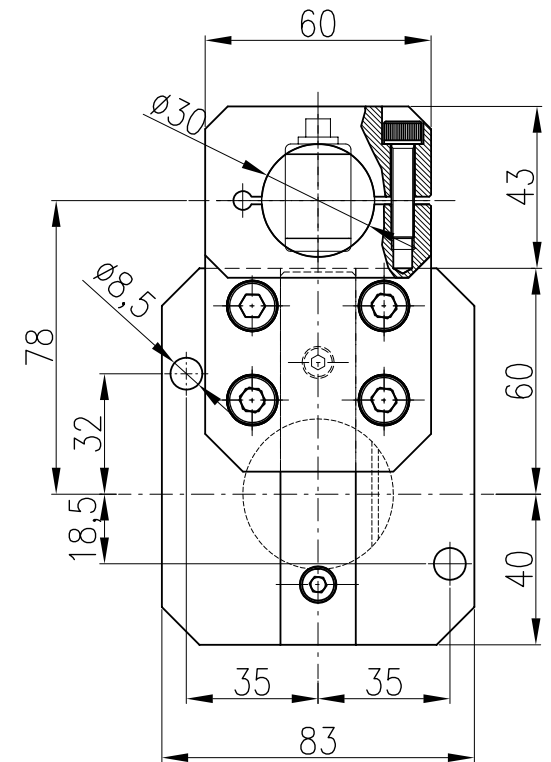
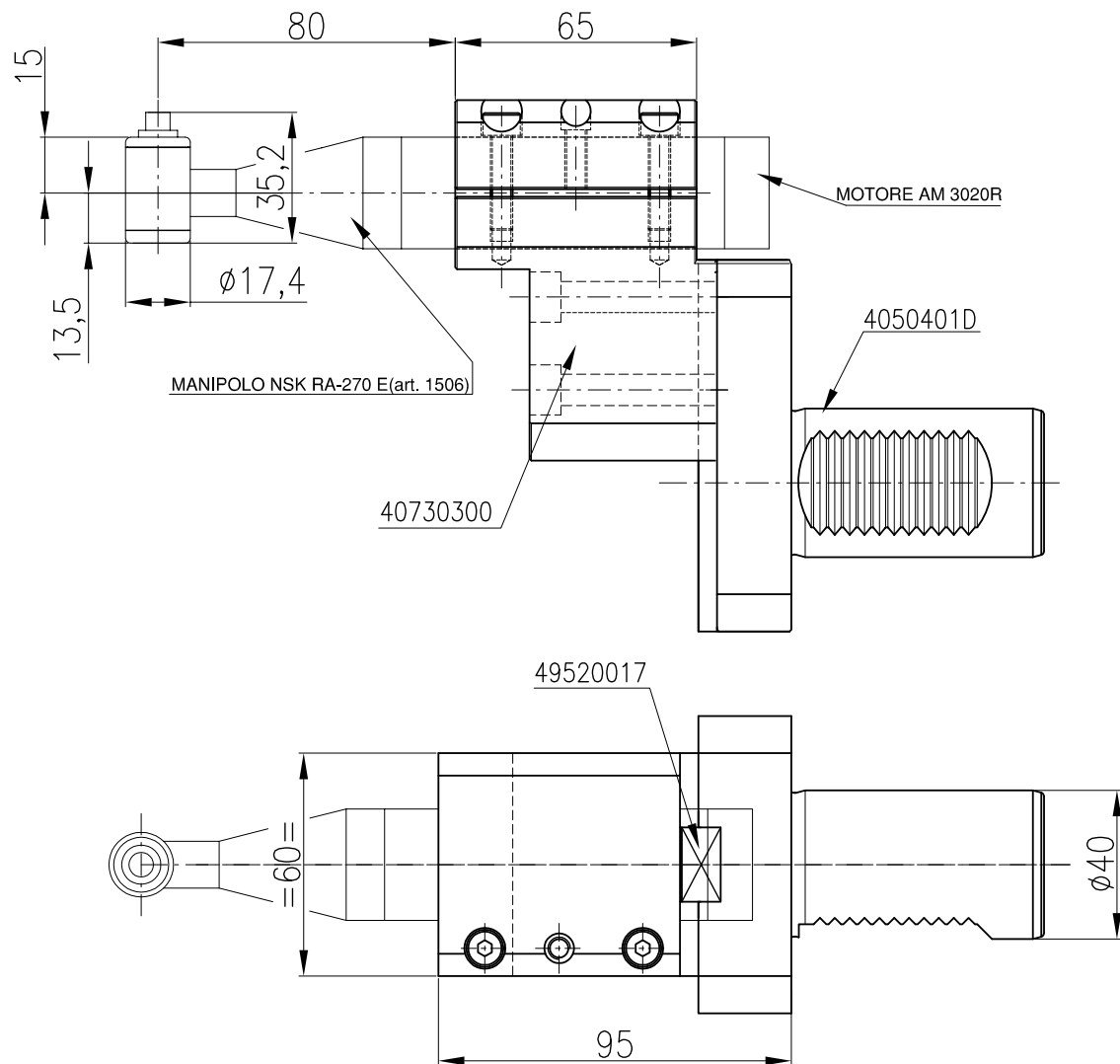
Note:

DA DEFINIRE
 Data:/..../....
 Firma

Note:

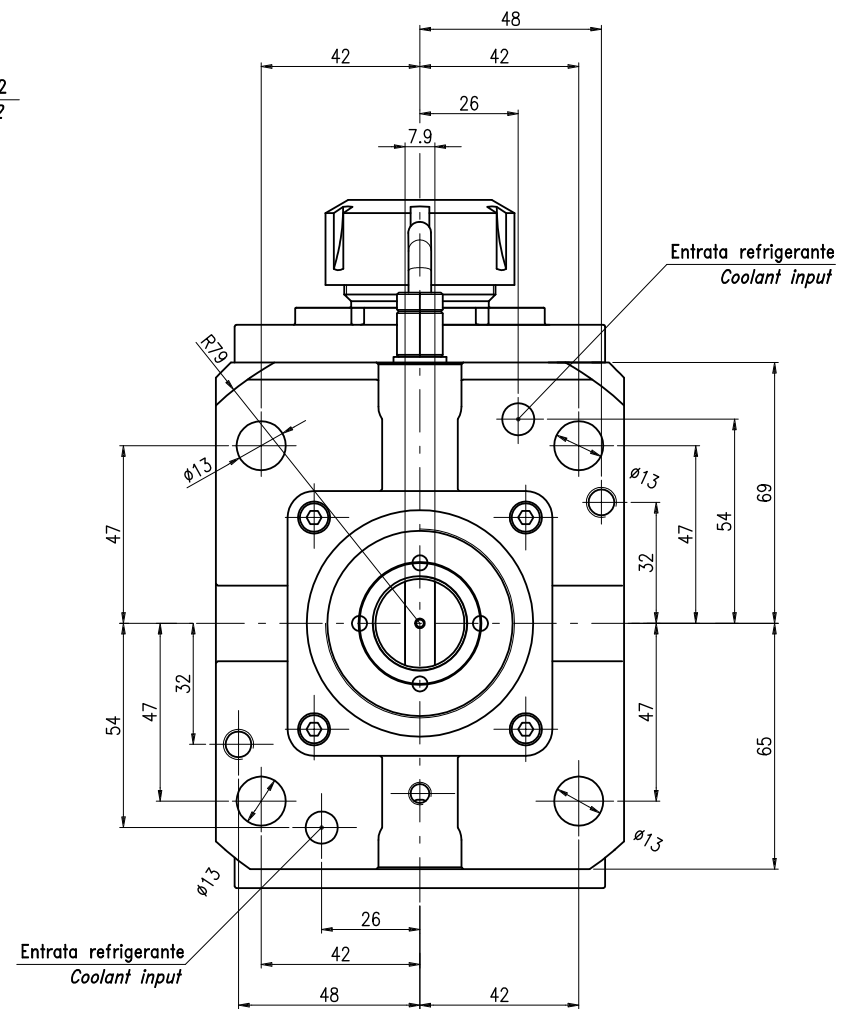
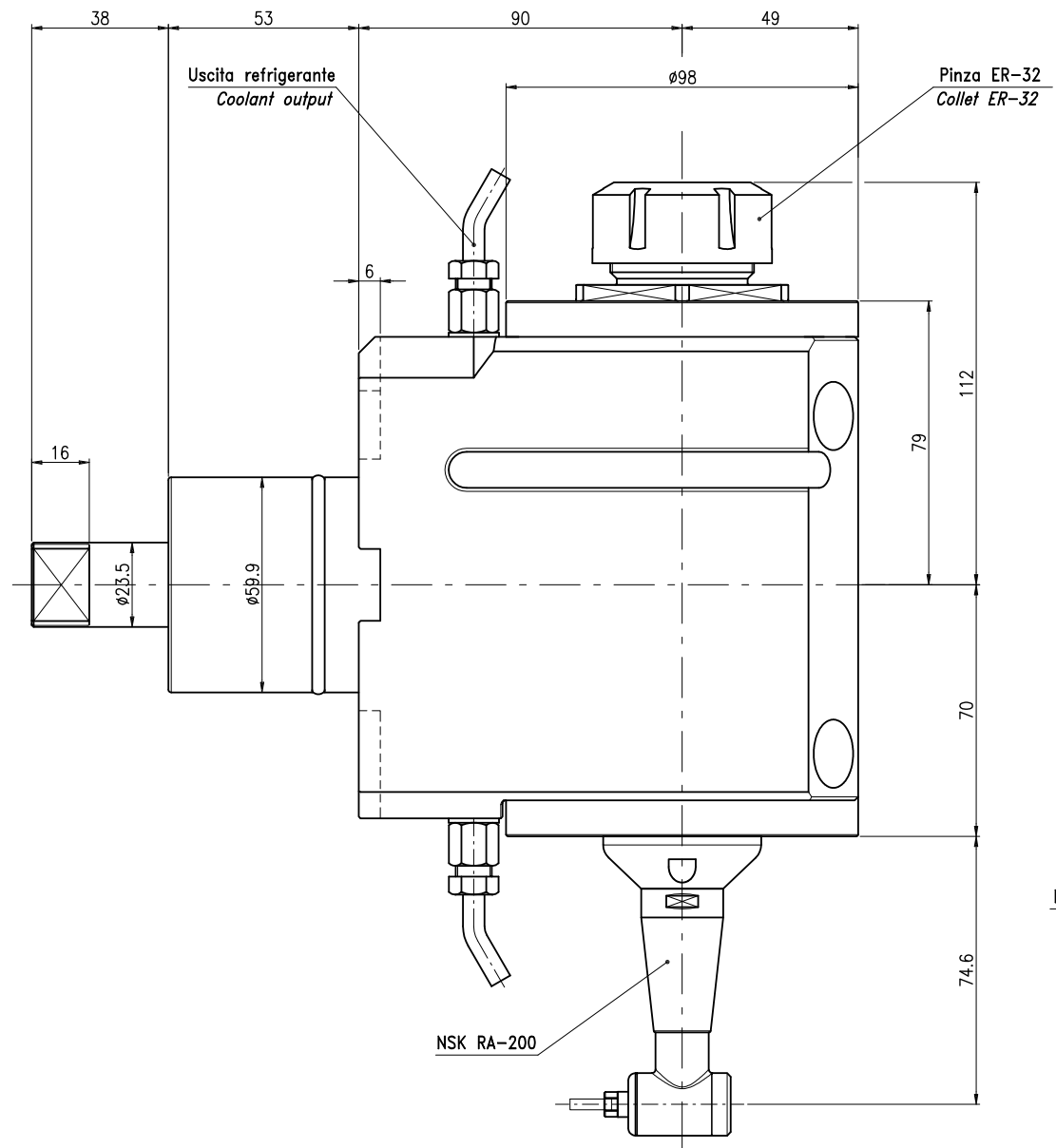
0,4x X-sovrametallo per rettifica in decimi di mm.

PORTA UT. FISSO ϕ 30 PER EMAG VDI-50/MANIPOLO HSK				Alberti Umberto Teste angolari e motorizzazioni Via E.H.GRIEG n°7 21047 SARONNO(VA) e-mail: alberti@net-one.it Tel. (02) 96703586 (2 linee r.a.) FAX (02) 96703620	
MODIFICHE	MATERIALE	TRATTAMENTO		FIRMA	DATA
				<i>Valassini</i>	02.05.06
SMUSSARE SPICOLI	TOLL. GENER.	SCALA	RUGOSITA'	NUMERO DISEGNO - CODICE	
		1:1	✓✓✓✓✓	9.07.30.300	



0,4x X=sovrametallo per rettifica in decimi di mm.

PORTA UT. FISSO PER VDI-40/MANIPOLO NSK $\phi 30$				 Alberti Umberto Teste angolari e motorizzazioni Via E.H.GREGG n°7, 21047 SARBONNO(VA) e-mail: alberti@net-one.it Tel. (02) 96703586 (2 linee r.a.) FAX (02) 96703620		
MODIFICHE	MATERIALE	TRATTAMENTO	FIRMA	VERIF.	DATA	RF. ORD.
			<i>Valassori</i>		18-01-07	
SMUSSARE SPIGOLI	TOLL. GENER.	SCALA	RUGOSITA'	NUMERO DISEGNO - CODICE		
		1:1	✓✓✓✓	5.07.30.301		



H:\DWG\OFFERTE\M90-3.5-NL-SLIMLINE.dwg

0.4x
X-sovrametallo per rettifica in decimi di mm.

**M90-3.5 ER-32 PER MORI SEIKI NL
CON SLIM-LINE RA-200**

MODIFICHE		MATERIALE	TRATTAMENTO	FIRMA	VERIF.	DATA	RF. ORD.
				<i>Carnovali</i>		22-09-04	
SMUSSARE SPIGOLI	TOLL. GENER.	SCALA	RUGOSITA'	NUMERO DISEGNO - CODICE			
		1:1	✓ ✓ ✓	9.92.3.60.XX			

Alberti Umberto
Teste angolari e motorizzazioni
Via E.H.GRIEG n°7 21047 SARONNO(VA)
e-mail: alberti@net-one.it
Tel. (02) 96703586 (2 linee r.a.) FAX (02) 96703620

A TERMINI DI LEGGE E' VIETATA LA RIPRODUZIONE DI QUESTO DISEGNO SENZA LA NOSTRA AUTORIZZAZIONE

