



**Solutions up to 58.000 rpm for micromachining.  
BT 30 spindle - automatic tool changer**



**TURBODRILL  
MINILINE**

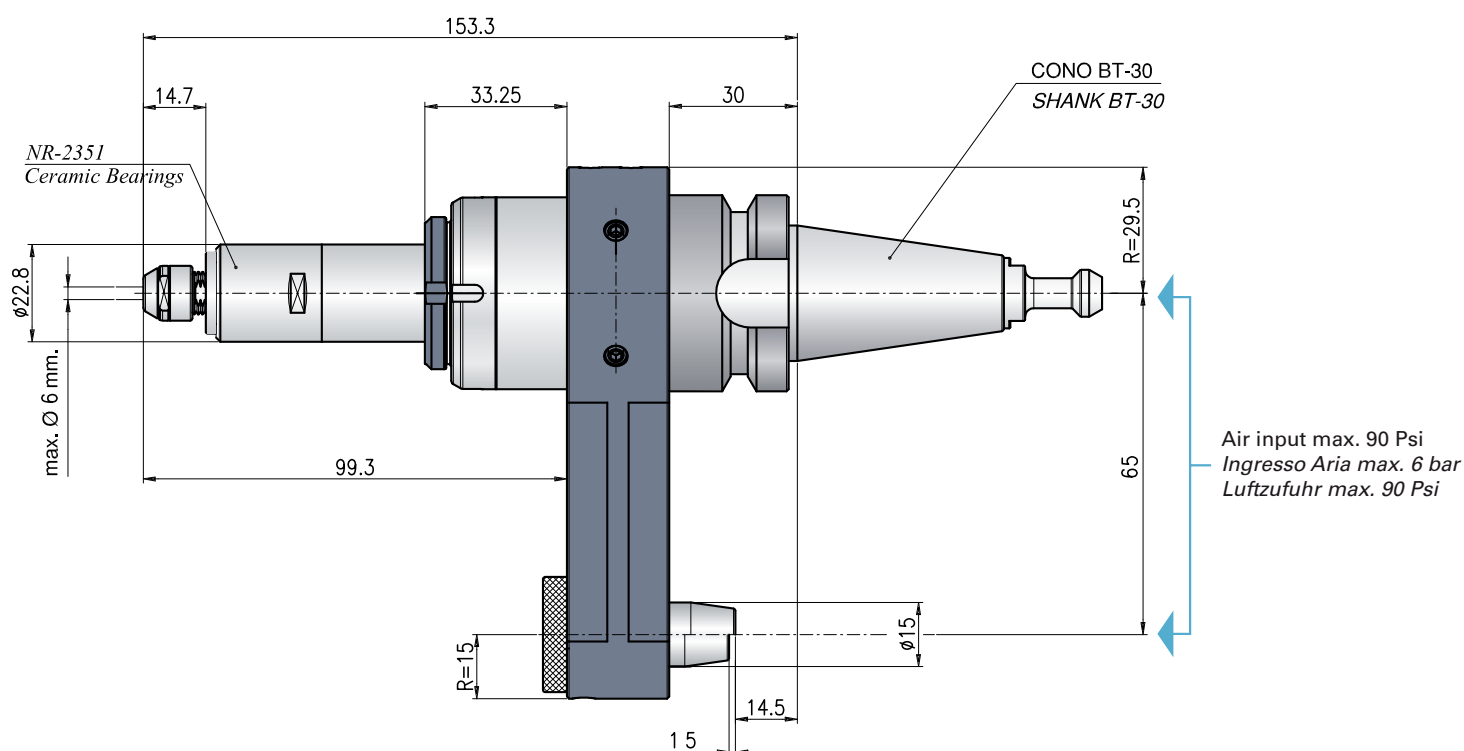
**DMG MORI SEIKI**

**MILLTAP 700**



**TURBODRILL NR-2351**

Driven through air motor / azionamento con motore ad aria / mit Luftmotor angetrieben



Technical Data / Dati Tecnici / Technische Daten		NR-2351	RA-200
RPM max. / Max. Velocità / Drehzahl max.	min <sup>-1</sup>	58.000	30.000
Type motor / Tipo di motore / motortyp		AM-600	AM-310
Collet / Pinze / Spannzange	mm	CHM $\varnothing 6$	CHS $\varnothing 3$
Power / Potenza / Energie	W	76	108
Rotation / Rotazione / Rotation		AM-600 RA Right, AM-600 LA Left	AM-310 RA Right, AM-310 LA Left
Air pressure / Pressione Aria / Luftdruck	Bar	max. 6 (max. 90 Psi)	max. 6 (max. 90 Psi)
Air consumption / consumo d'aria / Luftverbrauch	NI/min	160	226
Type Spindle / Tipo di manipolo / Spindeltyp		NR-2351	RA-200
Output RPM / N° Giri in uscita / Drehzahlausgang	min <sup>-1</sup>	--	20.000
Rt. reduction / Rt. in riduzione / Rt. Reduktion		--	1/1,5
Weight / Peso / Gewicht	Kg	2	2

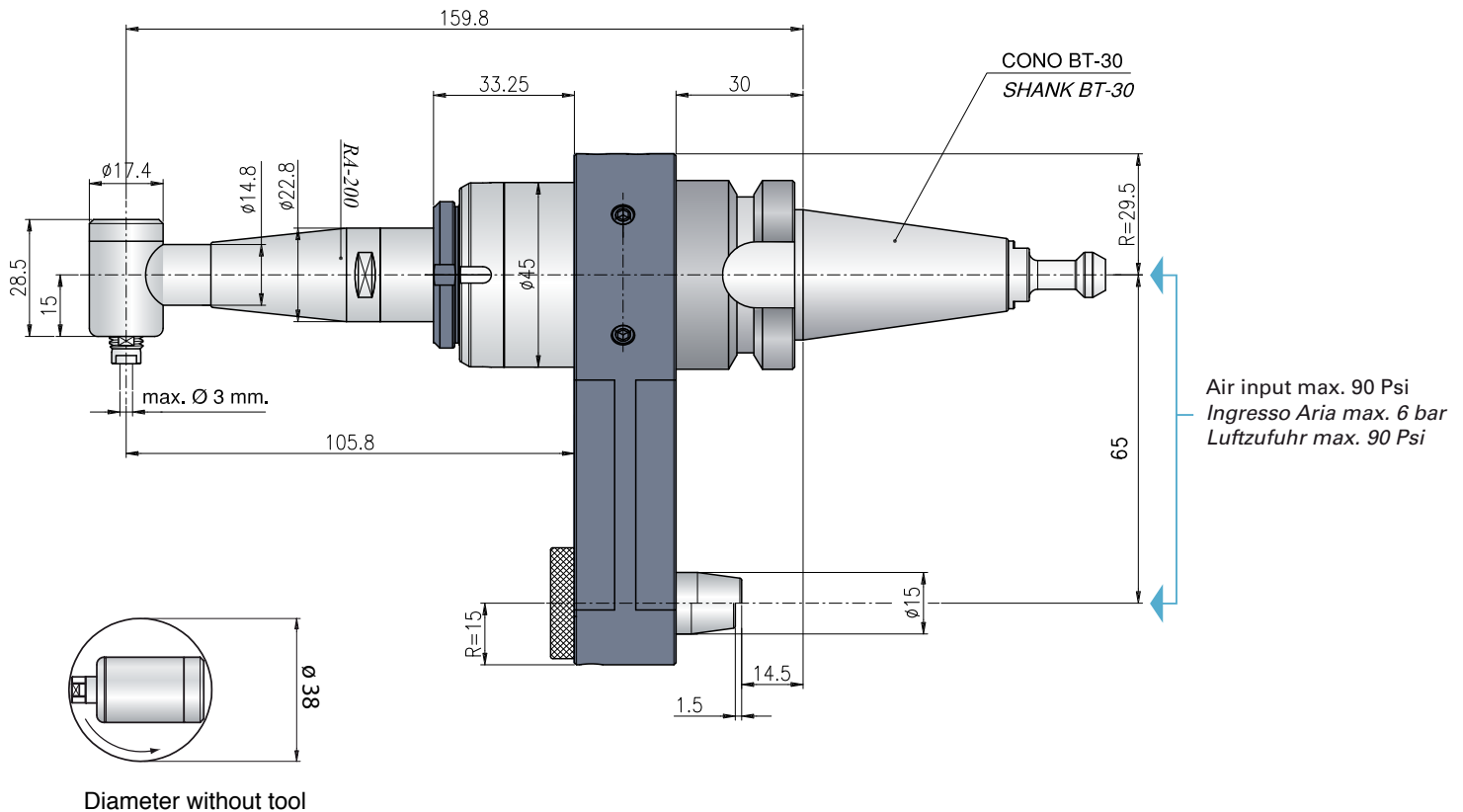
STANDARD EQUIPMENT INCLUDES: NAKANISHI Kit / Angle head / Collet / Wrenches / Instruction book

**For the correct functioning of the tool the machine spindle must not rotate**

Per il corretto funzionamento il mandrino della macchina non deve ruotare / Für die korrekte Verwendung von Werkzeug soll die Maschinenspindel nicht drehen

# TURBODRILL RA-200

Driven through air motor / azionamento con motore ad aria / mit Luftmotor angetrieben



Accessories / Accessori / Zubehör	NR-2351	RA-200
Collet / Pinze / Spannzange	CHM $\phi 0,3\text{mm}$ , $\phi 3$ every 0,1 and $\phi 2,35$ , $\phi 3,175$	CHS $\phi 0,5$ , $3\text{mm}$ every 0,1
Retaining block / Tassello di ritegno / Stop block	Special stop block w/air stop valve	Special stop block w/air stop valve
Air line kit / Filtro regolatore aria / Luftsystem	AL-0304	AL-0304



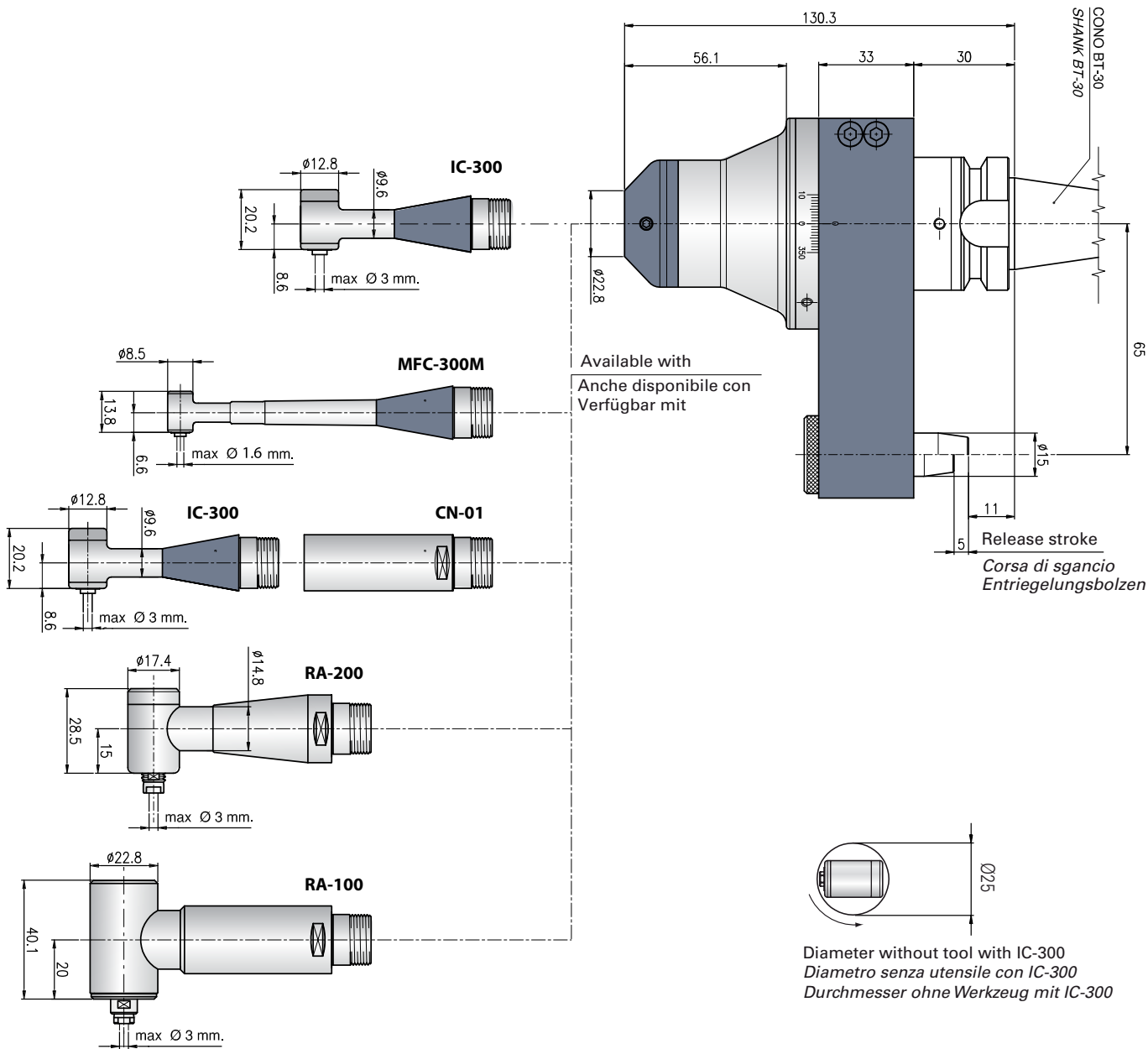
**In case of air through the spindle please use special pull stud!!!**  
 Nel caso di aria attraverso il mandrino utilizzare il tirante speciale !!!  
 Im Fall von Luft durch die Spindel verwenden Sie bitte spezielle Zugbolzen !!!

Air line kit / Filtro regolatore aria / Luftsystem - for NR-601 / RA-200



**SLIMLINE**

Driven through machine motor / azionamento tramite mandrino macchina / durch die Spindel angetrieben



**Technical Data / Dati Tecnici / Technische Daten**

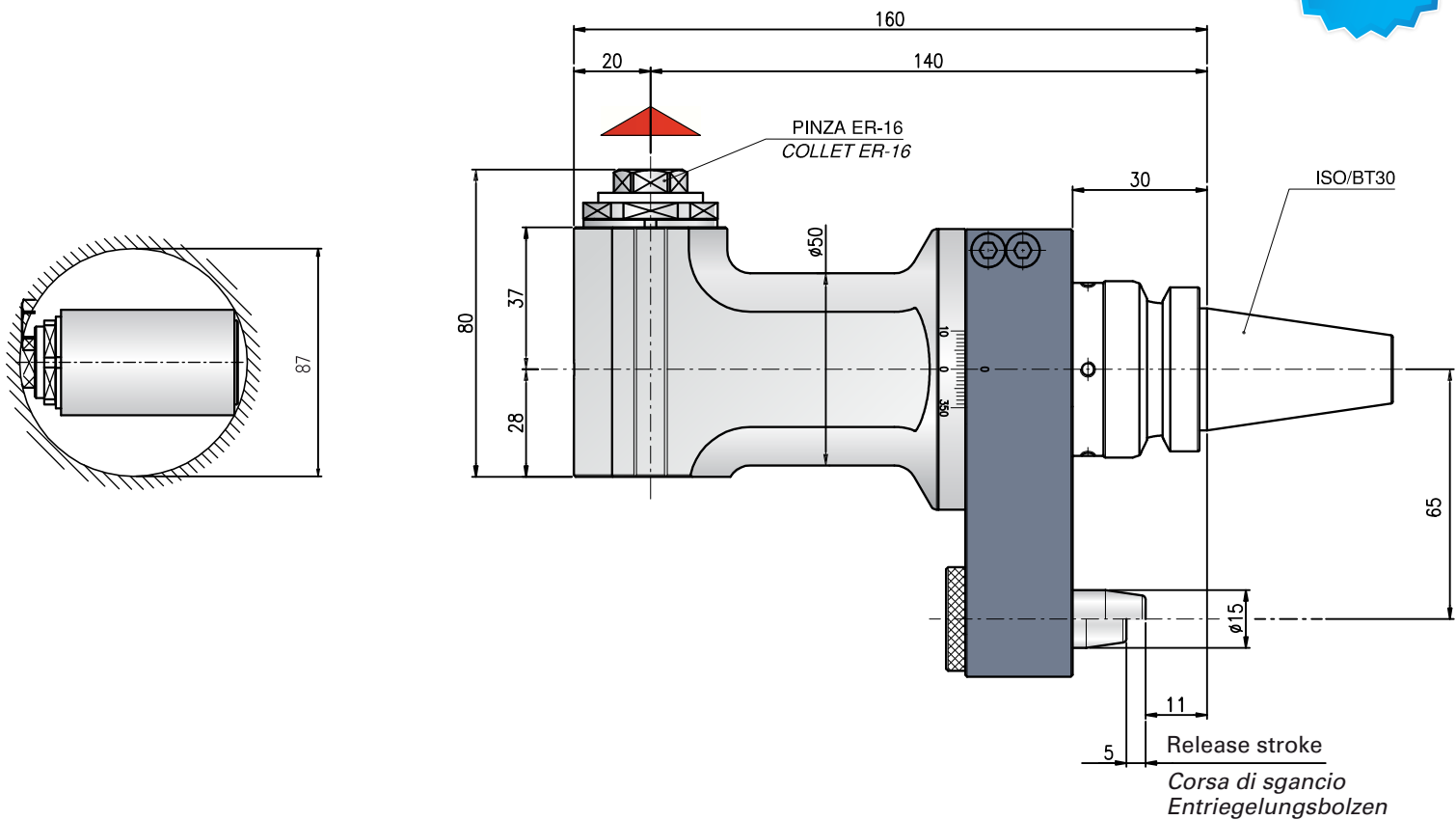
		<b>IC-300*</b>
RPM max. / Max. Velocità / Drehzahl max.	min <sup>-1</sup>	20.000
Rt. reduction / Rt. in riduzione / Rt. Reduktion		3/4
Collet / Pinze / Spannzange	mm	CHM Ø3
Type Spindle / Tipo di manipolo / Spindeltyp	W	IC-300
Rotation / Rotazione / Rotation		right/destra/recht, left/sinistra/links
Weight / Peso / Gewicht	Kg	3

STANDARD EQUIPMENT INCLUDES: NAKANISHI Kit / Angle head / Collet / Wrenches / Instruction book

\* For special applications only / solo per applicazioni speciali / nur für Sonderanwendungen

## MINILINE 1,5

Driven through machine motor / azionamento tramite mandrino macchina / durch die Spindel angetrieben



**Also available with coolant through the spindle (max 40 bar) and double output version.  
Disponibile anche nelle versioni con refrigerante interno dal cono (max 40 bar) e con doppia uscita.**

 Direction of rotation opposite to machine spindle / senso di rotazione contrario al mandrino / Drehrichtung entgegen Antriebsspindel

Technical Data / Dati Tecnici / Technische Daten		MINILINE 1,5/30
Rt / Rt / Rt		1:1
RPM max. / Max. velocità / Drehzahl max.	min <sup>-1</sup>	6.000
Max. axial load / Max. carico assiale / Max. Axialbelastung	N	250
Torque / Momento torcente / Drehmoment	Nm	7
Weight / Peso / Gewicht	kg	3
Collet / Pinza / Spannzange		ER-16 ø 1/10 mm

### OPTIONAL

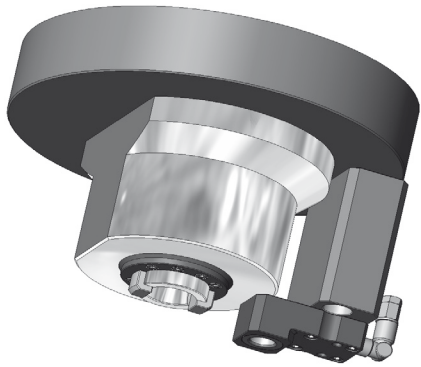
High speed / alta velocità / Höhere Drehzahl max 10.000 RPM

Coolant through the spindle / Refrigerazione attraverso il mandrino /  
Kühlmittelzufuhr durch die Spindel max 40 Bar

STANDARD EQUIPMENT INCLUDES: Angle head / Collet / Wrenches / Instruction book

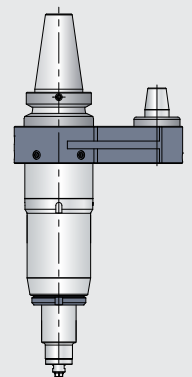
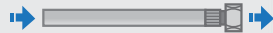
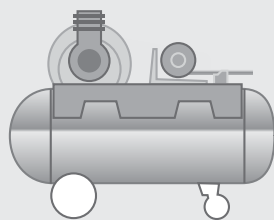
OPTIONAL

Special stop block for / *Stop block speciale* / *Sonderblock für*  
DMG Mori Seiki MILLTAP 700



**For the correct use of the air driven tools**  
*Per il corretto utilizzo delle unità ad aria*  
*Für eine richtige Verwendung von Luftköpfe*

Air line kit Set-up



Compressor / Compresore / Kompressor

Air line kit AL-0304

Spindle / Mandrino / Spindeltyp