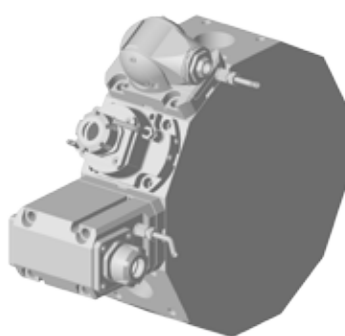


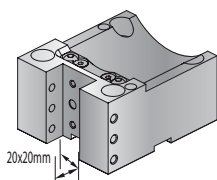
NZ 1500/2000 NT 3000 / DURATURN 2050/2550 NL 1500/2000 (20 station)

MORI SEIKI
THE MACHINE TOOL COMPANY

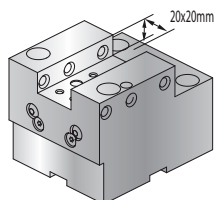


STATIC TOOLS

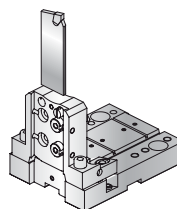
1) O.D. Cutting holder



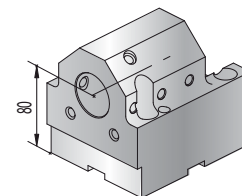
2) I.D. Cutting holder



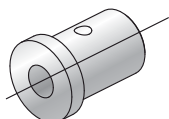
3) Cut-off holder



4) Boring bar holder



5) Boring bar sleeve



Technical Data / Dati Tecnici

Code
Codice

1) O.D. CUTTING HOLDER 20X20mm
1) Portautensile per esterni 20x20mm

AMS.NZ1.OD20

2) I.D. CUTTING HOLDER 20X20mm
2) Portautensile per interni 20x20mm

AMS.NZ1.ID20

3) CUT OFF HOLDER 26mm
3) Portalama 26mm

AMS.NZ1.CO26

Technical Data / Dati Tecnici

Code
Codice

4) BORING BAR HOLDER 32mm
4) Portabareno 32mm

AMS.NZ1.BB32

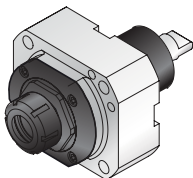
5) BORING BAR SLEEVE
5) Bussola di riduzione

AMS.NZ1.RDX

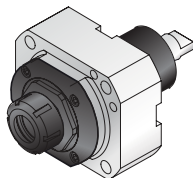
NZ 1500/2000 NT 3000 / DURATURN 2050/2550 NL 1500/2000 (20 station)

LIVE TOOLS

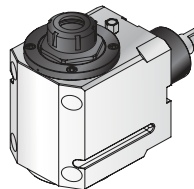
1A) Axial MA-2,5



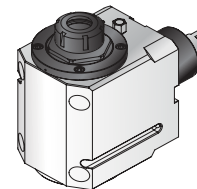
1B) Axial MA-2,5 C 70 Bar



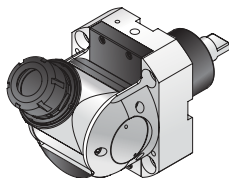
2A) Radial M90-2,5



2B) Radial M90-2,5 C 70 Bar



3) Adjustable MCU-1,5



Technical Data / Dati Tecnici

Code Codice

1A) AXIAL MA-2,5

1A) Assiale MA-2,5

AMS.NZ1.0100

1B) AXIAL MA-2,5 C 70 Bar

1B) Assiale MA-2,5 C 70 Bar

AMS.NZ1.010C

2A) RADIAL M90-2,5

2A) Radiale M90-2,5

AMS.NZ1.0200

Technical Data / Dati Tecnici

Code Codice

2B) RADIAL M90-2,5 C 70 Bar

2B) Radiale M90-2,5 C 70 Bar

AMS.NZ1.020C

3) ADJUSTABLE MCU-1,5

3) Orientabile MCU-1,5

AMS.NZ1.0500

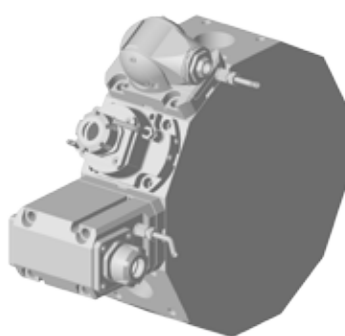


 **SmartChange**

Ref. Pg 17 / Rif. Pag 17

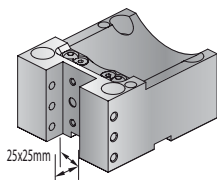
NL 1500 / NL 2000 / NL 2500 / NL 3000
(12 station)

MORI SEIKI
THE MACHINE TOOL COMPANY

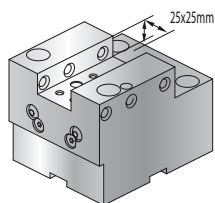


STATIC TOOLS

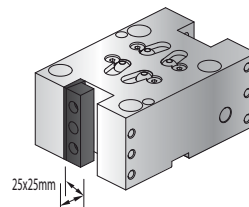
1) O.D. Cutting holder



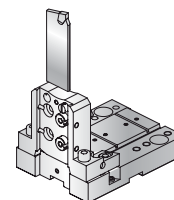
2) I.D. Cutting holder



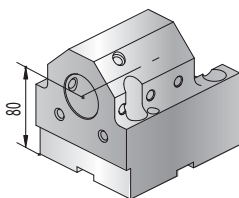
3) Double O.D. Cutting holder



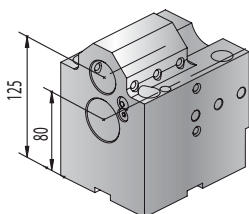
4) Cut-off holder



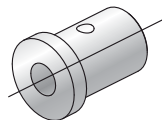
5) Boring bar holder



6) Double boring bar holder



7) Boring bar sleeve



Technical Data / Dati Tecnici

**Code
Codice**

1) O.D. CUTTING HOLDER 25X25mm

1) Portautensile per esterni 25x25mm

AMS.NL2.OD25

2) I.D. CUTTING HOLDER 25X25mm

2) Portautensile per interni 25x25mm

AMS.NL2.ID25

3) DOUBLE O.D. CUTTING HOLDER 25X25mm

3) Portautensile per esterni doppio 25x25mm

AMS.NL2.OD25.2

4) CUT OFF HOLDER 32mm

4) Portalama 32mm

AMS.NL2.CO32

Technical Data / Dati Tecnici

**Code
Codice**

5) BORING BAR HOLDER 40mm

5) Portabareno 40mm

AMS.NL2.BB40

6) DOUBLE BORING BAR HOLDER 40mm

6) Portabareno doppio 40mm

AMS.NL2.BB40.2

7) BORING BAR SLEEVE

7) Bussole di riduzione

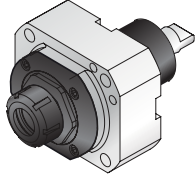
AMS.NL2.RDX

NL 1500 / NL 2000 / NL 2500 / NL 3000 (12 station)

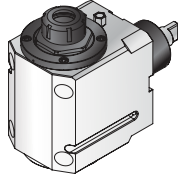
LIVE TOOLS

ER 32

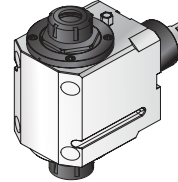
1A/B) Axial MA-3,5/3,5C



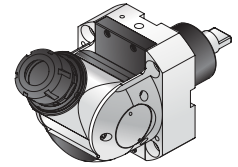
2 A/B) Radial M90-3,5/3,5C



3) Radial M90-3,5 2U



4) Adjustable MCU 3,5



Technical Data / Dati Tecnici

Code Codice

1A) AXIAL MA-3,5

1A) Assiale MA-3,5

AMS.NL2.0100

1B) AXIAL MA-3,5 C 70 Bar

1B) Assiale MA-3,5 C 70 Bar

AMS.NL2.010C

2A) RADIAL M90-3,5

2A) Radiale M90- 3,5

AMS.NL2.0200

Technical Data / Dati Tecnici

Code Codice

2B) RADIAL M90-3,5 C 70 Bar

2B) Radiale M90- 3,5 C 70 Bar

AMS.NL2.020C

3) RADIAL M90-3,5 2U

3) Radiale M90- 3,5 2U

AMS.NL2.0300

4) ADJUSTABLE MCU 3,5

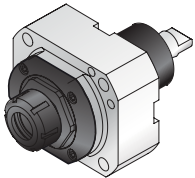
4) Orientabile MCU 3,5

AMS.NL2.0500

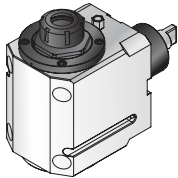
LIVE TOOLS

ER 40

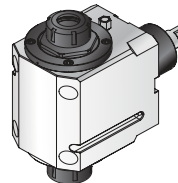
1A/B) Axial MA-4,5/4,5C



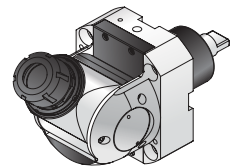
2 A/B) Radial M90-4,5/4,5C



3) Radial M90-4,5 2U



4) Adjustable MCU 3,5



Technical Data / Dati Tecnici

Code Codice

1A) AXIAL MA-4,5

1A) Assiale MA-4,5

AMS.NL2.0100.40

1B) AXIAL MA-4,5 C 70 Bar

1B) Assiale MA-4,5 C 70 Bar

AMS.NL2.010C.40

2A) RADIAL M90-4,5

2A) Radiale M90- 4,5

AMS.NL2.0200.40

Technical Data / Dati Tecnici

Code Codice

2B) RADIAL M90-4,5 C 70 Bar

2B) Radiale M90- 4,5 C 70 Bar

AMS.NL2.020C.40

3) RADIAL M90-4,5 2U

3) Radiale M90- 4,5 2U

AMS.NL2.0300.40

4) ADJUSTABLE MCU 3,5

4) Orientabile MCU 3,5

AMS.NL2.0500



 **SmartChange**

Ref. Pg 17 / Rif. Pag 17